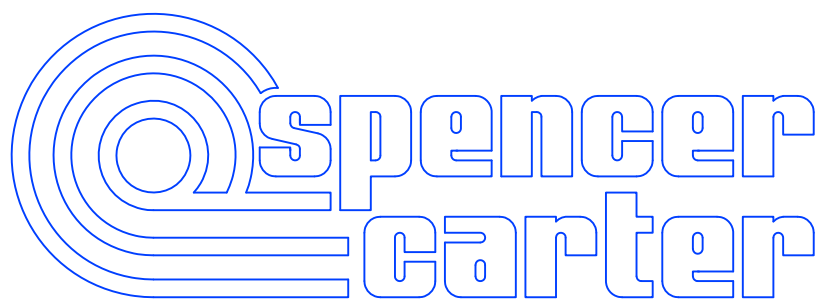


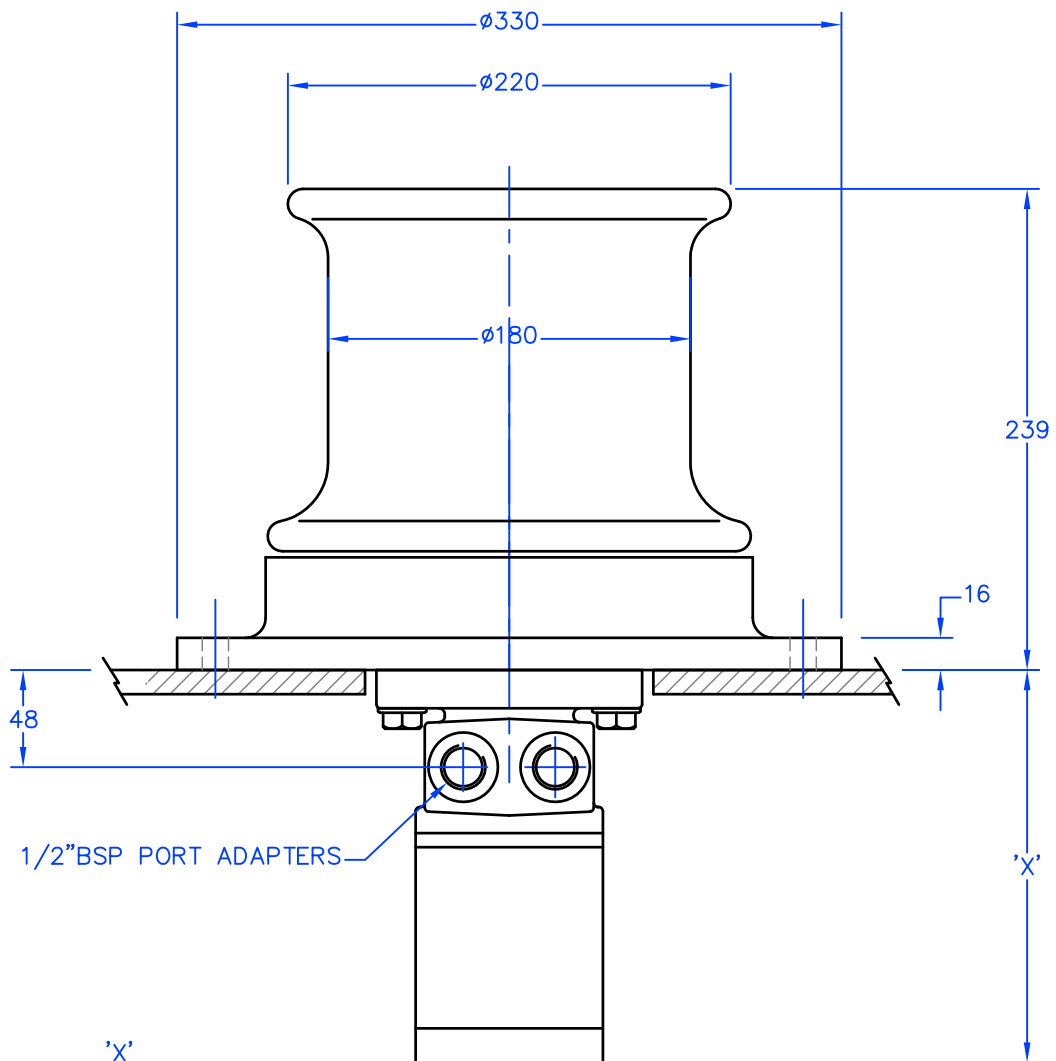
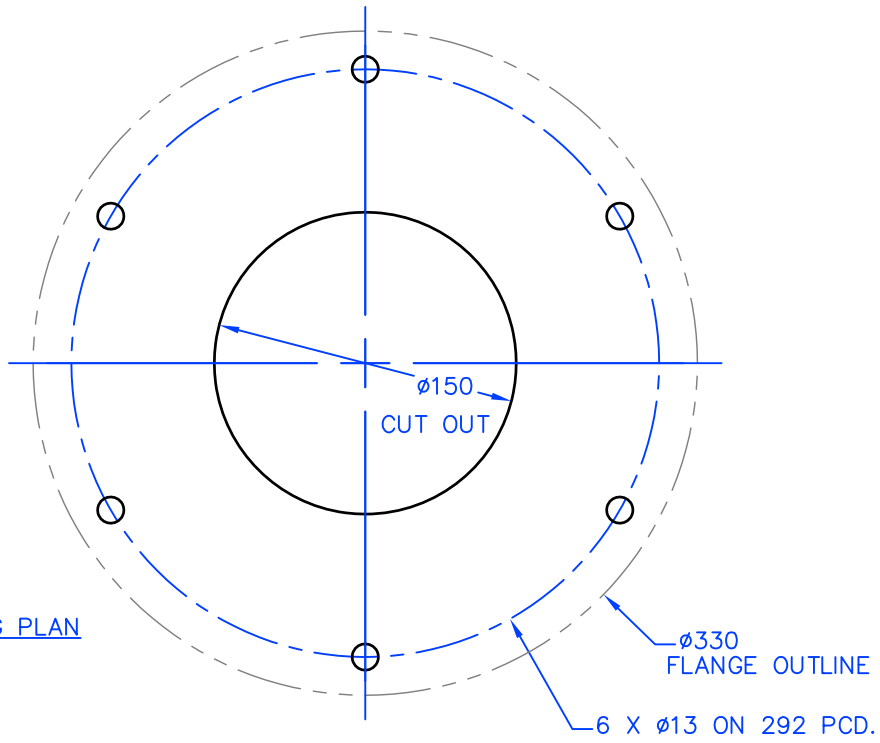
7" DRUM CAPSTAN HAULER
REF. C2, C3 AND C4



SPENCER CARTER LTD
TREGONIGGIE INDUSTRIAL ESTATE
FALMOUTH
CORNWALL
TR11 4SN
U.K.

TEL. 01326 373423
FAX. 01326 373571

BASE MOUNTING PLAN



$1/2"$ BSP PORT ADAPTERS

'X'

C2 = 160 MM
C3 = 180 MM

7" DRUM CAPSTAN HAULER – C2 AND C3

Scale 1:4

MEDIUM DUTY 7" DRUM CAPSTAN HAULER.

Ref. C2 _____ 750 LB. (340 Kg.) Nominal pull
Ref. C3 _____ 1000 LB. (450 KG.) Nominal pull
Ref. C4 _____ 1400 LB. (630 Kg.) Nominal pull

A simple capstan drum hauler for potting, cargo handling, anchoring or mooring etc., with a choice of three hydraulic motor sizes.

The base and bearing assembly are mainly aluminium for light weight. The capstan drum is cast iron. Sealed bearings require no maintenance.

Working speeds quoted in the specification are in line with fishing requirements. Slower speeds may be more suitable for mooring duties and a smaller pump, hoses, and reservoir size may then be utilised.

The capstan hauler is intended for continuous operation with limited static holding time. There will be a slow rotational 'creep' if the winch is made to hold a static load for an extended period.

A hydraulically released multidisc brake is available if a positive static hold is an essential requirement.

750 LB. 7" DRUM CAPSTAN HAULER REF C2

HYDRAULIC MOTOR SIZE _____ 163 CC/REV
MOTOR TORQUE _____ 250 NM.
AVERAGE WORKING SPEED _____ 45 METRES/MIN. (83 RPM)
MAXIMUM WORKING SPEED _____ 90 METRES/MIN.

HYDRAULIC INPUT REQUIRED TO SUIT AVERAGE WORKING SPEED:

INPUT FLOW _____ 14 LITRES/MIN.
INPUT PRESSURE _____ 120 BAR

TYPICAL CHOICE OF ASSOCIATED EQUIPMENT

HYDRAULIC PUMP/CLUTCH UNIT _____ REF. 2P4.5 (21 LPM @ 1000 RPM)
RESERVOIR _____ REF. R2 (11 LITRE CAPACITY)
RETURN LINE FILTER _____ REF. F1
CONTROL VALVE _____ REF. 2V
HYDRAULIC HOSE SIZE _____ 1/2" BORE 2 WIRE REINFORCED

WEIGHT OF HAULER HEAD _____ APPROX. 30 KG.

1000 LB. 7" DRUM CAPSTAN HAULER REF C3

HYDRAULIC MOTOR SIZE _____ 295 CC/REV
MOTOR TORQUE _____ 430 NM.
AVERAGE WORKING SPEED _____ 45 METRES/MIN. (83 RPM)
MAXIMUM WORKING SPEED _____ 90 METRES/MIN.

HYDRAULIC INPUT REQUIRED TO SUIT AVERAGE WORKING SPEED:

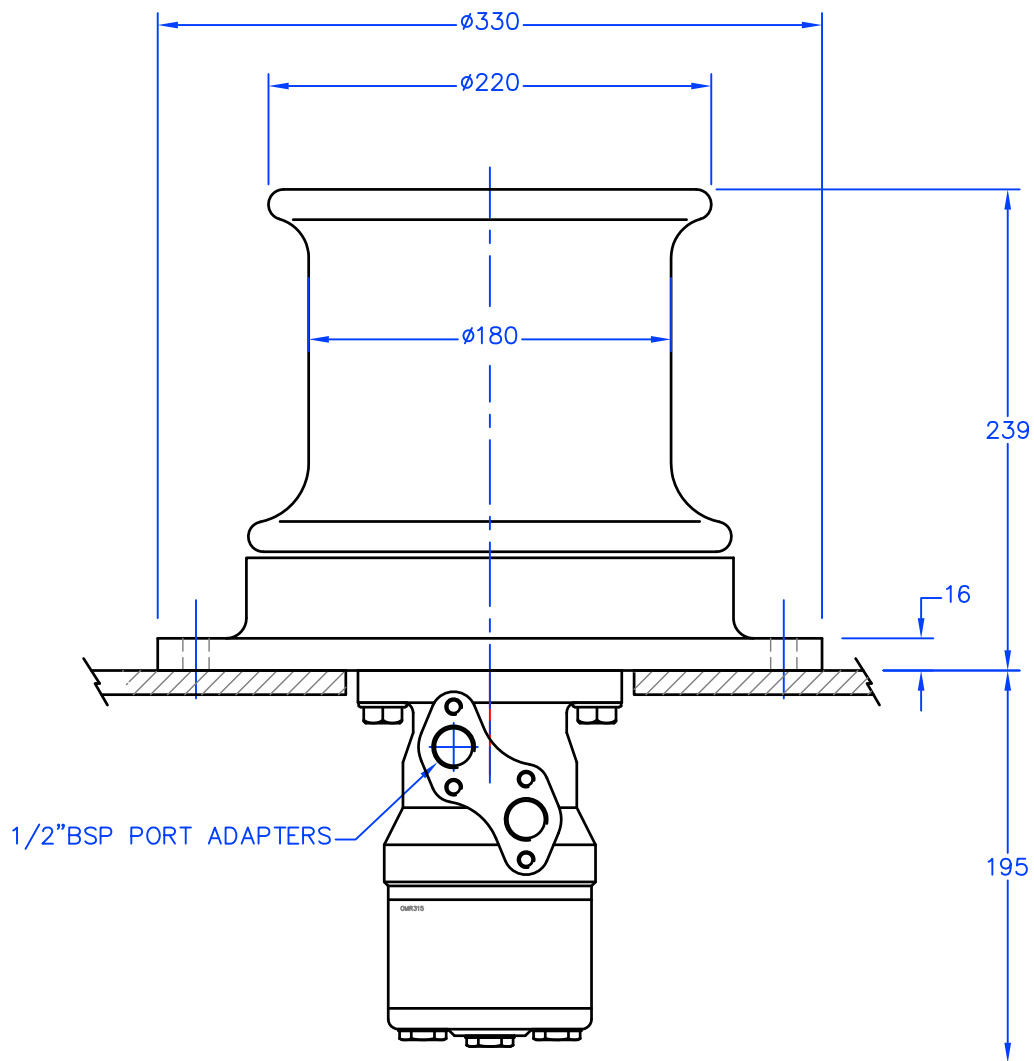
INPUT FLOW _____ 22 LITRES/MIN.
INPUT PRESSURE _____ 120 BAR

TYPICAL CHOICE OF ASSOCIATED EQUIPMENT

HYDRAULIC PUMP/CLUTCH UNIT _____ REF. 2P8 (36 LPM @ 1000 RPM)
RESERVOIR _____ REF. R5 (25 LITRE CAPACITY)
RETURN LINE FILTER _____ REF. F1
CONTROL VALVE _____ REF. 2V
HYDRAULIC HOSE SIZE _____ 1/2" BORE 2 WIRE REINFORCED

WEIGHT OF HAULER HEAD _____ APPROX. 30 KG.

7" DRUM CAPSTAN HAULER – C4



Scale 1:4

1400 LB. 7" DRUM CAPSTAN HAULER REF C4

HYDRAULIC MOTOR SIZE _____ 315 CC/REV
MOTOR TORQUE _____ 550 NM.
AVERAGE WORKING SPEED _____ 40 METRES/MIN. (72 RPM)
MAXIMUM WORKING SPEED _____ 80 METRES/MIN.

HYDRAULIC INPUT REQUIRED TO SUIT AVERAGE WORKING SPEED:

INPUT FLOW _____ 25 LITRES/MIN.
INPUT PRESSURE _____ 140 BAR

TYPICAL CHOICE OF ASSOCIATED EQUIPMENT

HYDRAULIC PUMP/CLUTCH UNIT _____ REF. 2P8 (36 LPM @ 1000 RPM)
RESERVOIR _____ REF. R5 (25 LITRE CAPACITY)
RETURN LINE FILTER _____ REF. F1
CONTROL VALVE _____ REF. 2V
HYDRAULIC HOSE SIZE _____ 1/2" BORE 2 WIRE REINFORCED

WEIGHT OF HAULER HEAD _____ APPROX. 38 KG.