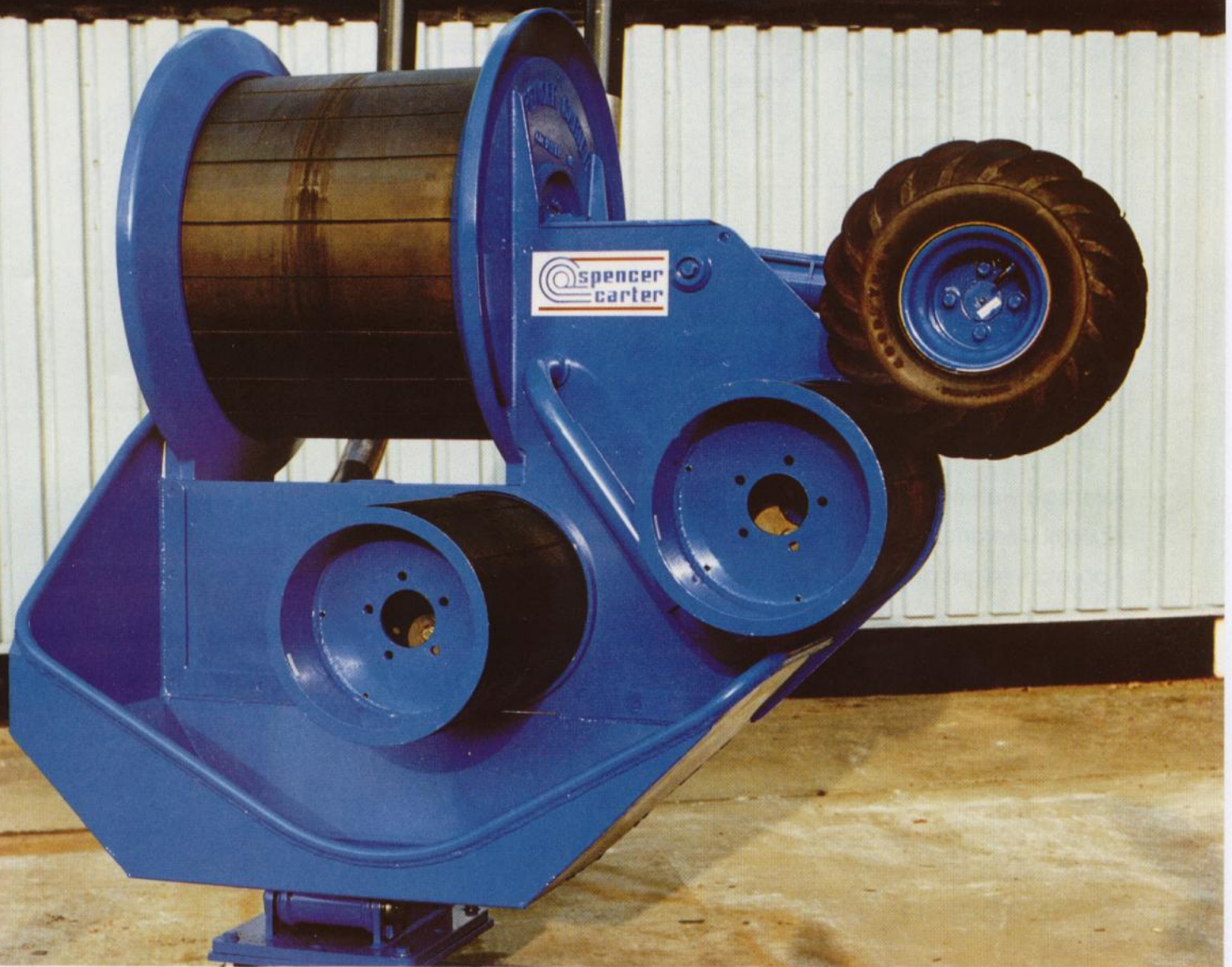


NHO-10

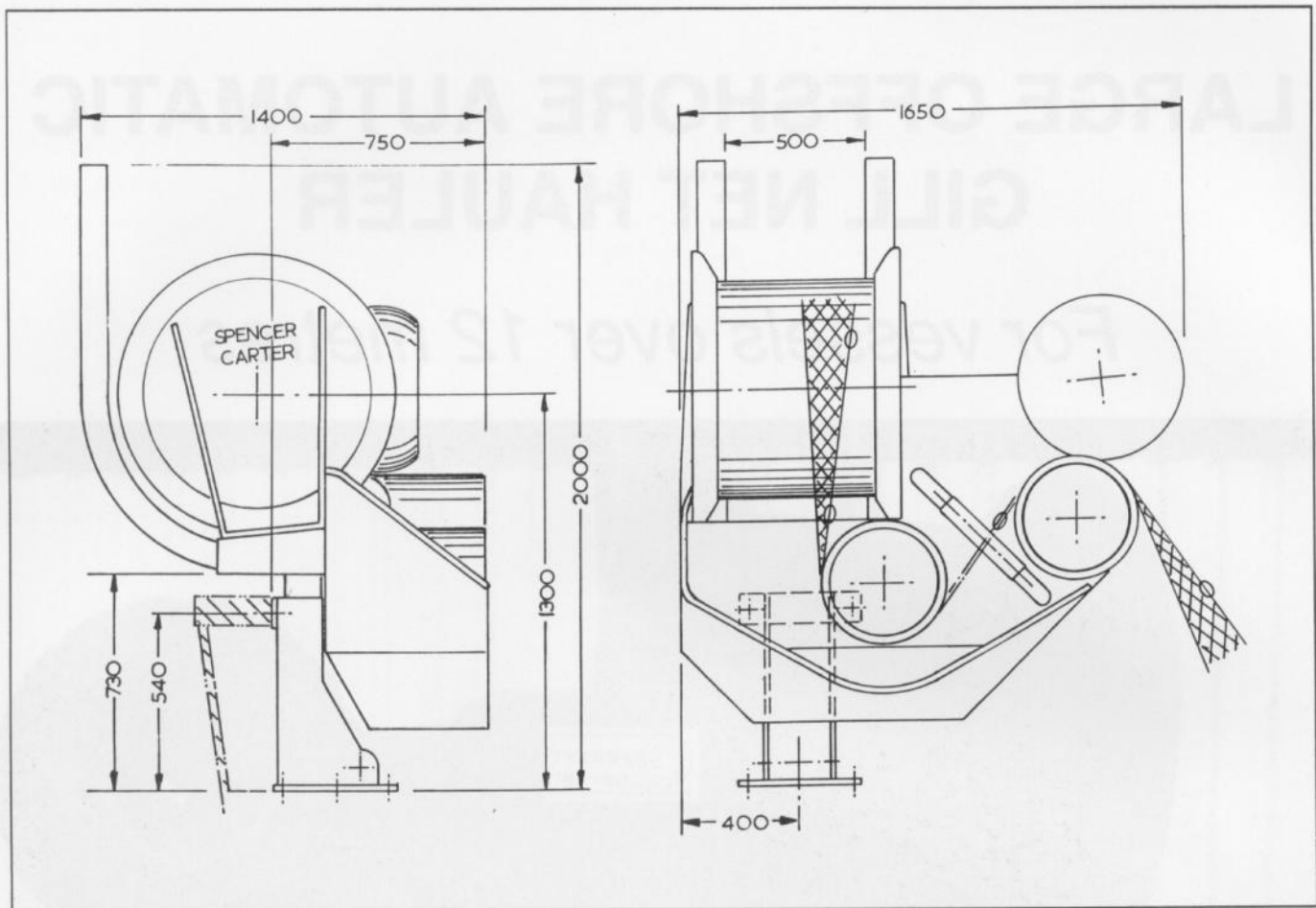
LARGE OFFSHORE AUTOMATIC GILL NET HAULER

For vessels over 12 metres



NET HAULER MAKERS
FOR THE WORLD

NHO 10 SPECIFICATION



Average working speed	200 Ft/min (60 metres/min)
Approx. Maximum pull	1 Ton
Approx. Weight of hauler	500 kg

HYDRAULIC INPUT REQUIRED TO SUIT AVERAGE WORKING SPEED

Input flow	10 Gall/Min (45 litres/min)
Input Pressure	3000 PSI (207 Bar)

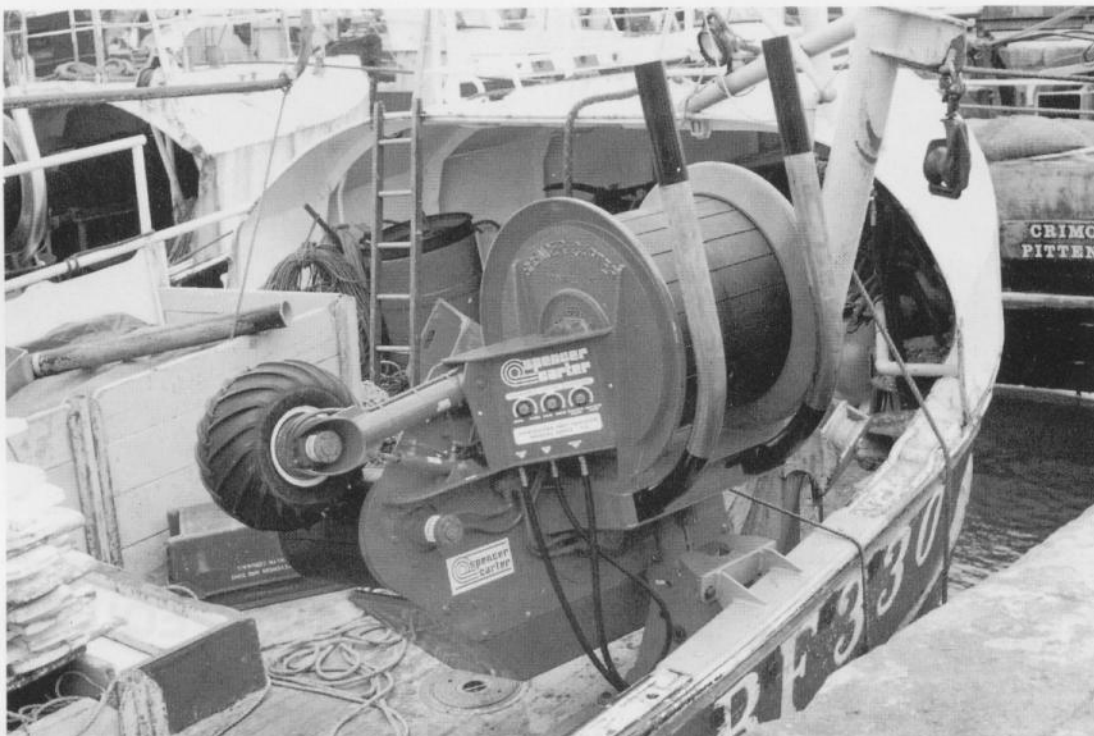
TYPICAL CHOICE OF ASSOCIATED EQUIPMENT

Hydraulic Pump/Clutch	REF 3P14 (14 GPM @ 1000 RPM)
Reservoir	REF R18 (18 Gall capacity)
Return Line Filter	REF F2
Oil Cooler	REF OC2
Hydraulic Hose Size	3/4" Bore 2 wire reinforced
Hydraulic Oil	B.P. Energol HLP 46

PRECISE HAULING CONTROL



POWERED TILT INBOARD



NHO-10

LARGE OFFSHORE AUTOMATIC GILLNET HAULER

Designed for working in depths in excess of 150 fathoms. This model is only suitable for installation aboard vessels of 12 metres length or more.

Three powerful rubberised drums transport the net inboard. A powered roller tensioned by a hydraulic ram weights down on the net over the last drum to provide the initial traction. Stainless steel tubular guides direct the incoming net onto the first drum. A tray beneath the inboard roller provides both guidance for stray net and also a collection area for loose fish etc., that would otherwise fall free on the deck.

The pedestal base incorporates a hydraulic ram to tilt the hauler inboard for coming alongside.

ALSO AVAILABLE

- Portside Models.
- Wheel-house hydraulic control.
- Net Transporters.
- Full Hydraulic Systems to be powered from main engine or auxiliary.



MARINE HYDRAULIC EQUIPMENT

FALMOUTH, CORNWALL, U.K. Tel: (0326) 373423 Fax: (0326) 373571