

AUTOMATIC GILL NET HAULER

NHO-03



STARBOARD SIDE SHOWN

PORTSIDE MODELS AVAILABLE



NET HAULER MAKERS
FOR THE WORLD

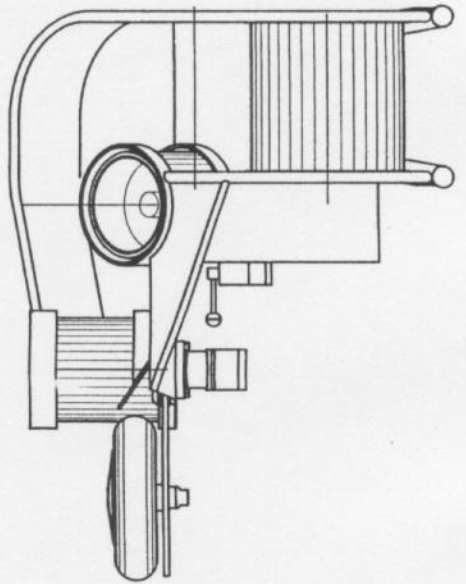


STANDARD PERFORMANCE SPECIFICATION

AVERAGE RETRIEVE SPEED 60 METRES / MIN
 MAXIMUM RETRIEVE SPEED 120 METRES / MIN
 APPROX. MAXIMUM PULL 320 KG
 WEIGHT APPROX. 100 KG

HYDRAULIC SUPPLY REQUIRED

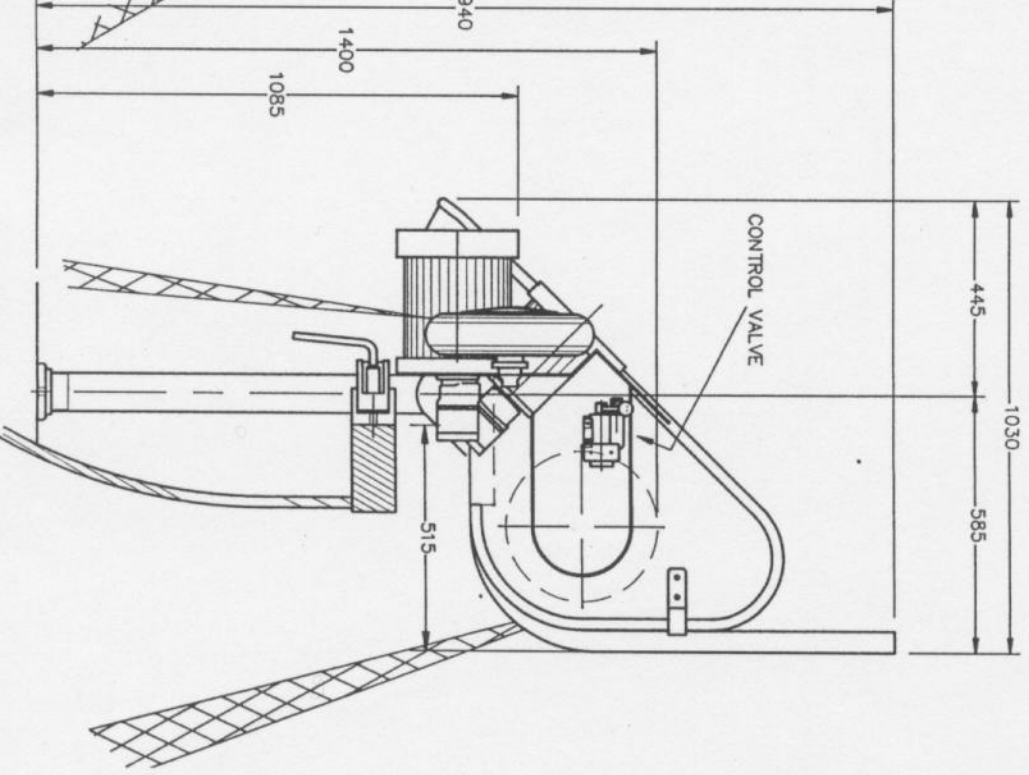
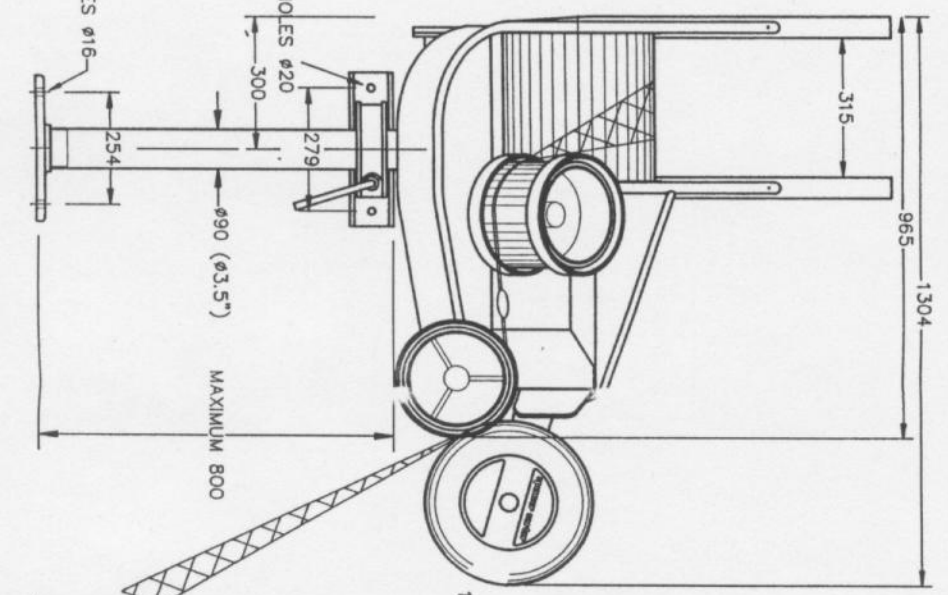
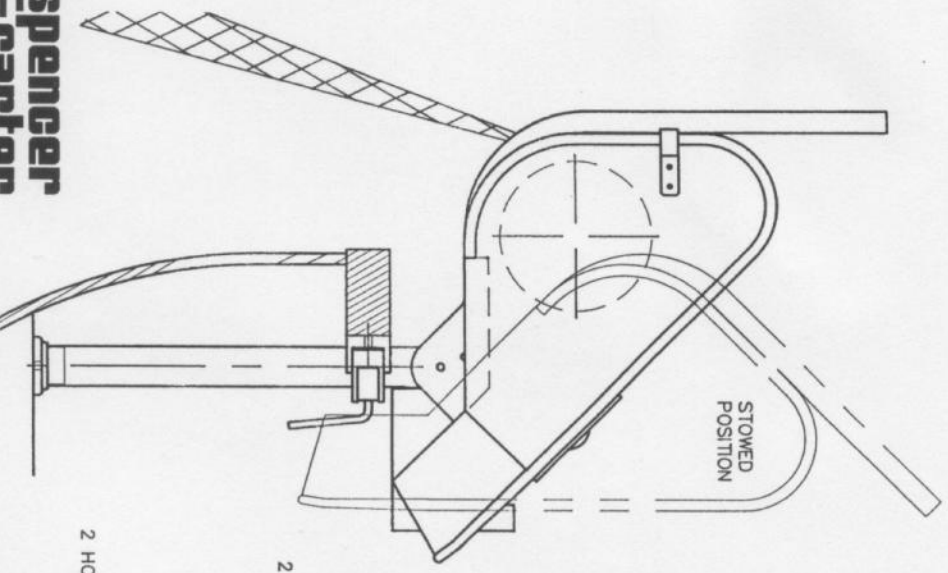
FLOW RATE 24 LPM
 WORKING PRESSURE 104 BAR



TYPICAL CHOICE OF ASSOCIATED EQUIPMENT

HYDRAULIC PUMP REF 2P8 (36 LPM/1000 RPM)
 RESERVOIR REF R5 (25 LITRES)
 RETURN LINE FILTER REF F1
 HYDRAULIC PIPE SIZE REF 1/2" BORE 2 WIRE
 HYDRAULIC OIL HLP 46

ENGINE POWER WILL BE REQUIRED WILL BE 13 HP AT 1000 RPM. A SATISFACTORY WORKING SPEED WILL BE AT APPROX. 700 RPM.



NHO-03

AUTOMATIC GILLNET HAULER IDEALLY SUITED FOR VESSELS FROM 8-12 METERS

Three hydraulic powered rubberised drums transport the net inboard. A tensioned roller over the last drum assists the traction. Stainless steel tubular guides direct the incoming net onto the first drum. A tray beneath the inboard roller provides both guidance for stray net and also a collection area for loose fish etc., that would otherwise fall free on the deck.

The pedestal is pivoted to enable the hauler to be tilted in board form coming alongside.

Hauler is constructed in marine grade aluminium. Pedestal clamp and foot in cast aluminium. Pedestal hot dip galvanised steel. Paint finish 2 pack polyurethane enamel. Supplied with hydraulic motors and directional control valve with integral relief valve.



MARINE HYDRAULIC EQUIPMENT

FALMOUTH, CORNWALL, U.K. Tel: (01326) 373423 Fax: (01326) 373571