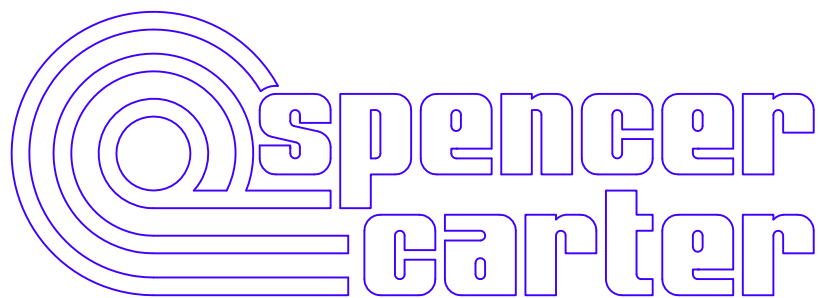
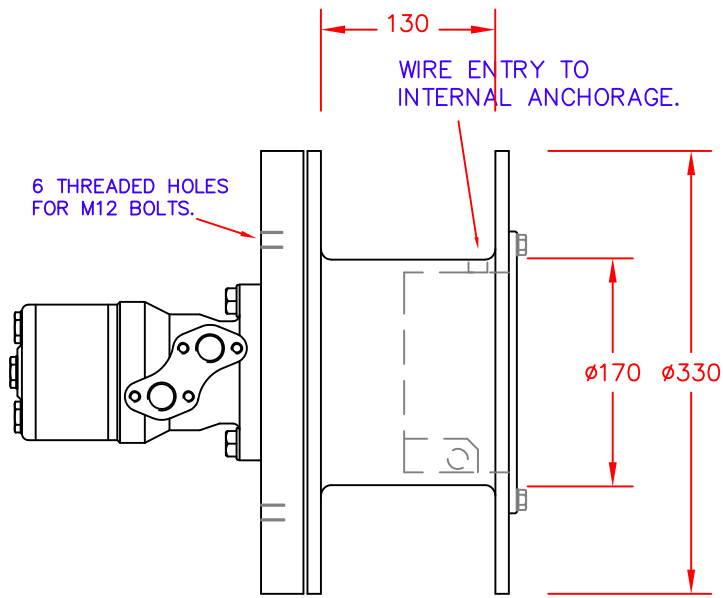


1400 LB CARGO WINCH - CW4

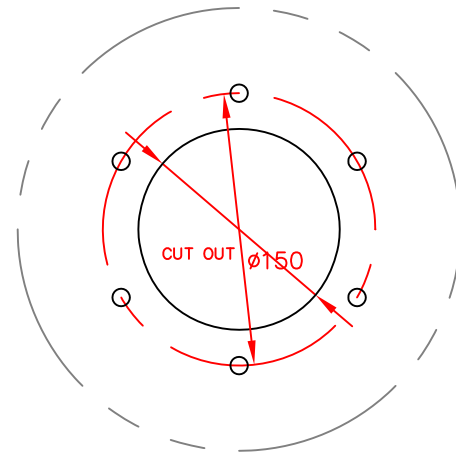


SPENCER CARTER LTD
TREGONIGGIE INDUSTRIAL ESTATE
FALMOUTH
CORNWALL
TR11 4SN
U.K.

TEL. 01326 373423
FAX. 01326 373571

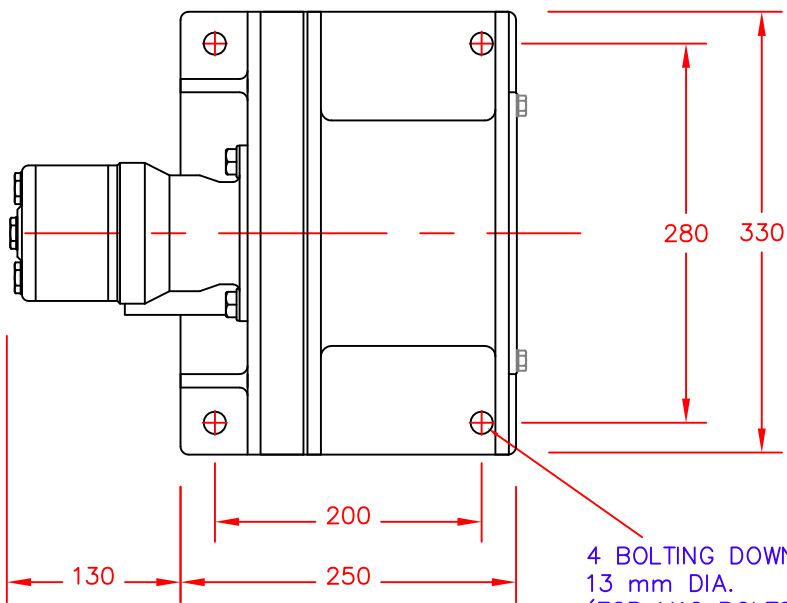


BASE MOUNTING PLAN FOR FLANGE MOUNTING.

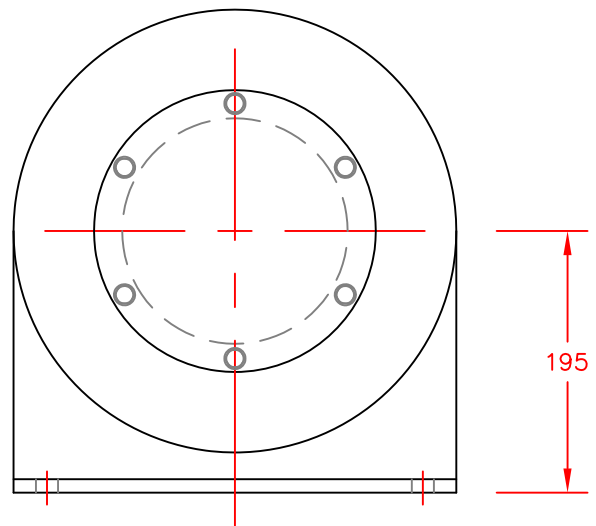
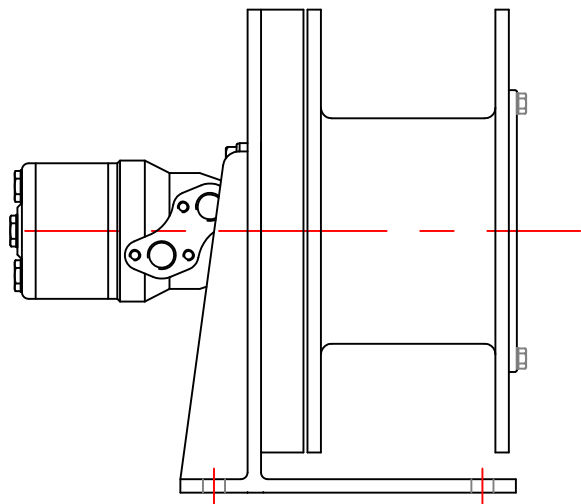


6 HOLES M12 CL. ON 203 PCD.

STANDARD UNIT REF. CW4. (FLANGE MOUNTED)



ANGLED BASE MOUNTING REF. CB4.
SHOWN ASSEMBLED WITH WINCH UNIT



1400 LB (630 KG.) CARGO HANDLING WINCH REF. CW4

The standard cargo winch is suitable for mounting against a plate or bulkhead with the hydraulic motor projecting from the reverse side of the mounting surface. An optional right angled base bracket is available for base mounting.

Substantial sealed bearings are provided for the winch drum. The hydraulic motor is not required to carry any side loading. Bearings are sealed and require no maintenance.

The base and bearing assembly are mainly aluminium for light weight. The winch drum is galvanised steel. The winch is finished painted in two part epoxy primer and top coat.

Working speeds quoted in the specification are generally suitable for cargo handling, fish boxes, and similar, from ship to quay side. The hydraulic supply can be modified for faster or slower working speeds.

The winch is intended for continuous operation, raising and lowering a load with intermittent support of a static load. Continuous support of a static load will cause the winch to creep, and the load will be gradually lowered.

1400 LB. (630 KG.) CARGO HANDLING WINCH REF CW4

HYDRAULIC MOTOR SIZE _____ 315 CC/REV
MOTOR TORQUE _____ 550 NM.
WINCH DRUM CAPACITY _____ 40 METRES / Ø10 MM WIRE
WINCH DRUM SPEED _____ 140 RPM.
APPROXIMATE HOIST SPEED _____ 1.5 METRES / SECOND
FIRST LAYER PULL _____ 630 KG.
TOP LAYER PULL _____ 415 KG.

HYDRAULIC INPUT REQUIRED TO SUIT AVERAGE WORKING SPEED:

INPUT FLOW _____ 36 LITRES/MIN.
INPUT PRESSURE _____ 140 BAR

TYPICAL CHOICE OF ASSOCIATED EQUIPMENT

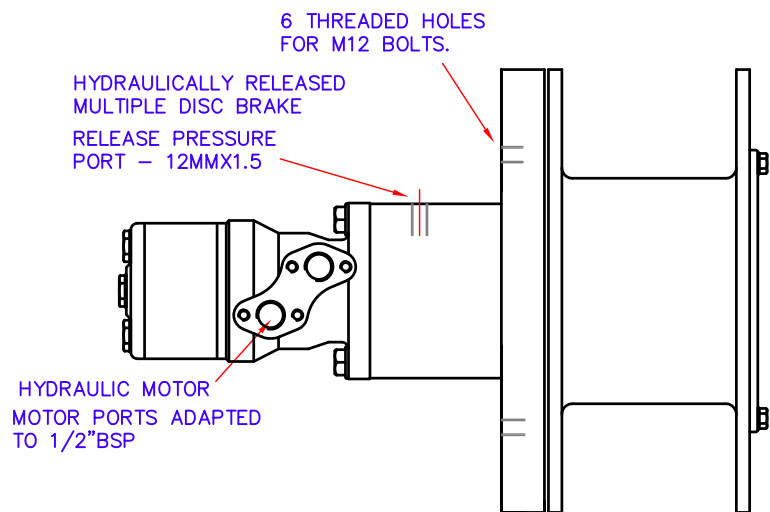
HYDRAULIC PUMP/CLUTCH UNIT _____ REF. 2P8 (36 LPM @ 1000 RPM)
RESERVOIR _____ REF. R5 (25 LITRE CAPACITY)
RETURN LINE FILTER _____ REF. F1
CONTROL VALVE _____ REF. 2V
HYDRAULIC HOSE SIZE _____ 1/2" BORE 2 WIRE REINFORCED

WEIGHT OF WINCH HEAD _____ APPROX. 30 KG.

CARGO/LANDING WINCH WITH OPTIONAL BRAKE.
FOR FLANGE OR BULKHEAD MOUNTING.

THE WINCH IS SUITABLE FOR FLANGE OR BULKHEAD MOUNTING WITH THE BRAKE AND MOTOR ASSEMBLY PROJECTING ON THE REVERSE SIDE OF THE MOUNTING SURFACE.

THE HYDRAULICALLY RELEASED MULTIPLE DISC BRAKE WILL HOLD A STATIC LOAD OF UP TO 630 KG. AND IS RELEASED BY HYDRAULIC WORKING PRESSURE REACHING 32 BAR.



HYDRAULIC SUPPLY REQUIRED:

AN OPEN LOOP HYDRAULIC SUPPLY MUST BE PROVIDED WITH ADEQUATE LOAD CONTROL VALVE AND BRAKE RELEASE SHUTTLE AS SHOWN ON THIS CIRCUIT DIAGRAM.

