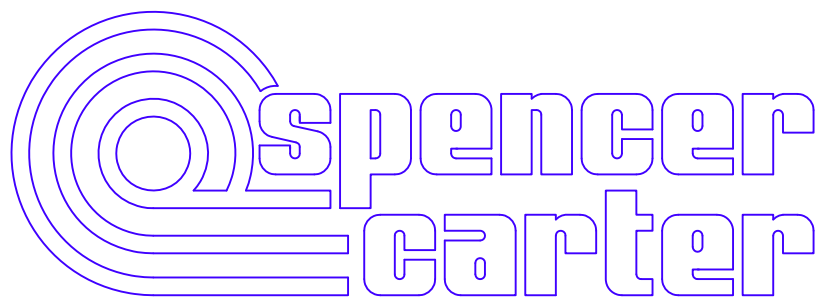
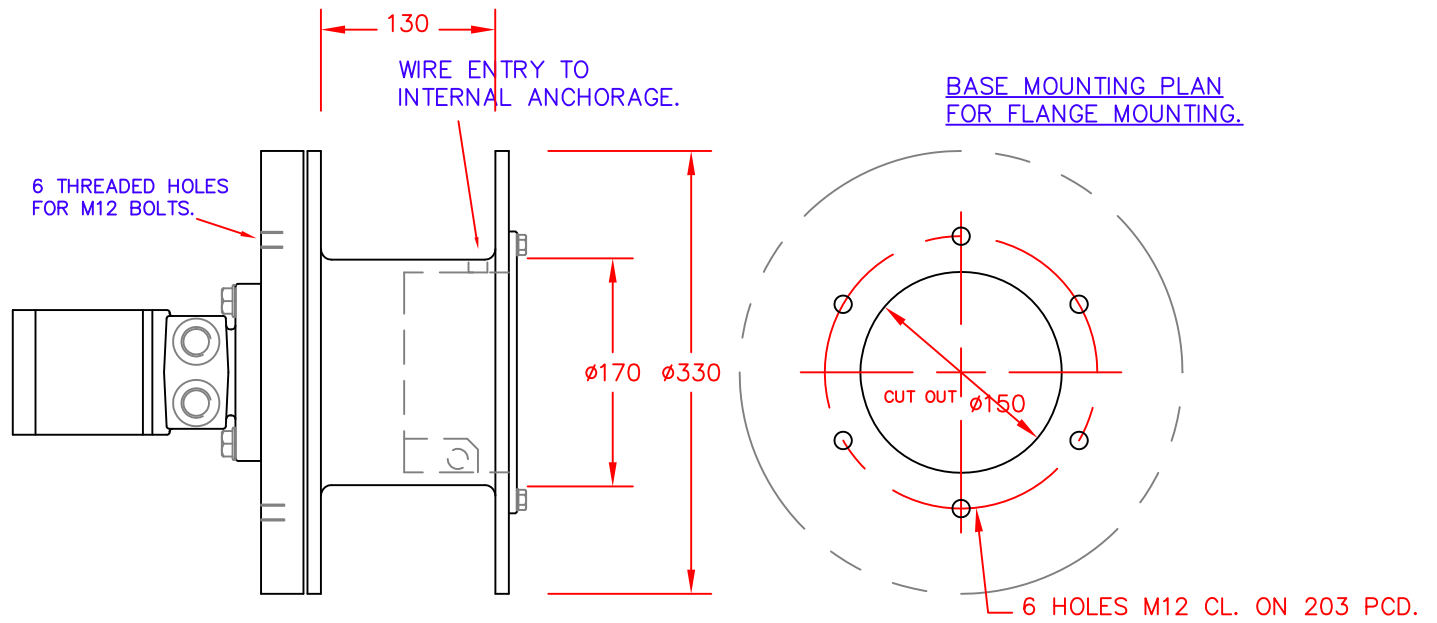


## 1000 LB CARGO WINCH - CW3

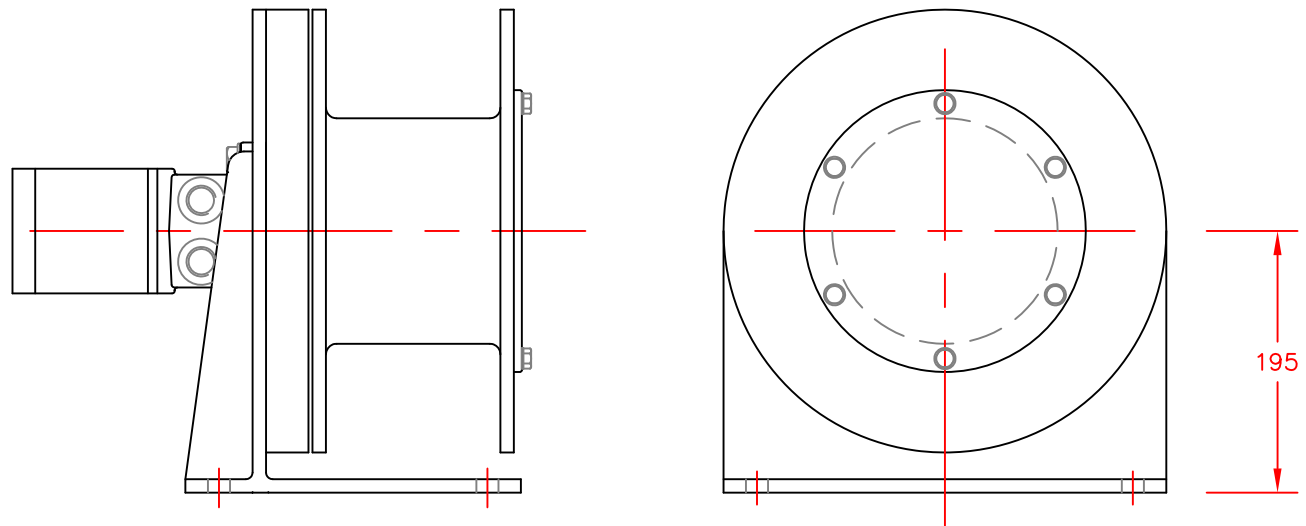
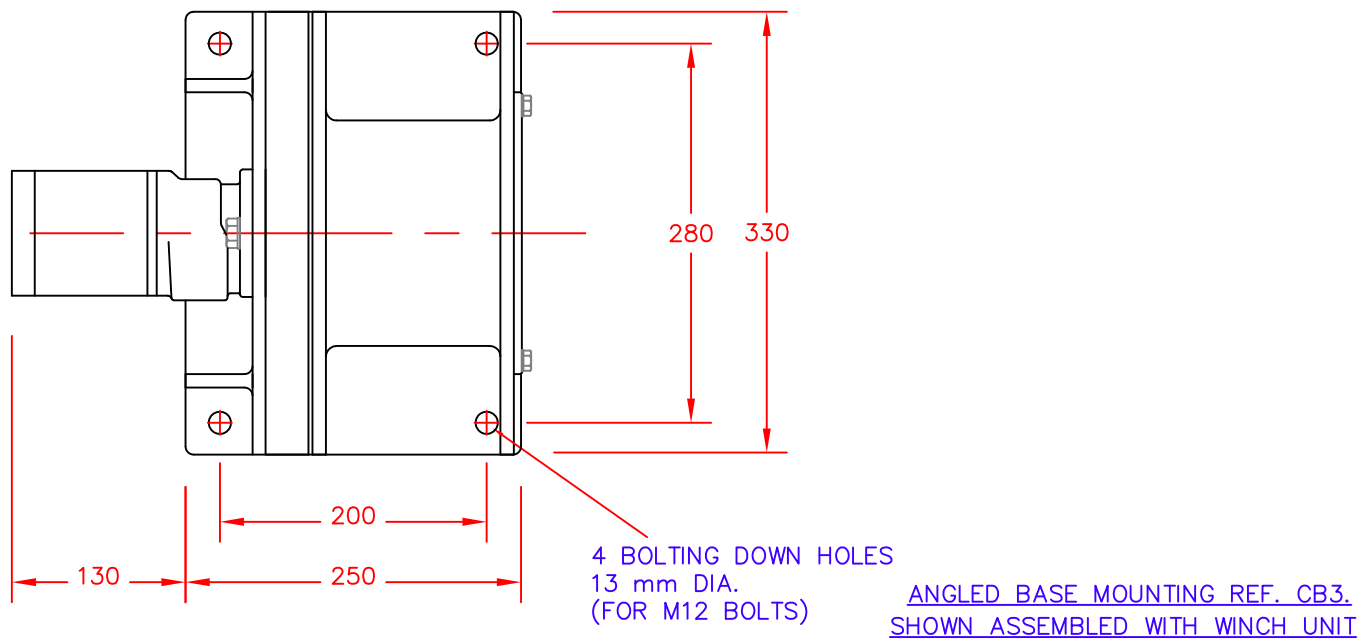


SPENCER CARTER LTD  
TREGONIGGIE INDUSTRIAL ESTATE  
FALMOUTH  
CORNWALL  
TR11 4SN  
U.K.

TEL. 01326 373423  
FAX. 01326 373571



STANDARD UNIT REF. CW3. (FLANGE MOUNTED)



### 1000 LB (450 KG.) CARGO HANDLING WINCH REF. CW3

The standard cargo winch is suitable for mounting against a plate or bulkhead with the hydraulic motor projecting from the reverse side of the mounting surface. An optional right angled base bracket is available for base mounting.

Substantial sealed bearings are provided for the winch drum. The hydraulic motor is not required to carry any side loading. Bearings are sealed and require no maintenance.

The base and bearing assembly are mainly aluminium for light weight. The winch drum is galvanised steel. The winch is finished painted in two part epoxy primer and top coat.

Working speeds quoted in the specification are generally suitable for cargo handling, fish boxes, and similar, from ship to quay side. The hydraulic supply can be modified for faster or slower working speeds.

The winch is intended for continuous operation, raising and lowering a load with intermittent support of a static load. Continuous support of a static load will cause the winch to creep, and the load will be gradually lowered.

### 1000 LB. (450 KG.) CARGO HANDLING WINCH REF CW3

HYDRAULIC MOTOR SIZE \_\_\_\_\_ 295 CC/REV  
MOTOR TORQUE \_\_\_\_\_ 430 NM.  
WINCH DRUM CAPACITY \_\_\_\_\_ 40 METRES / Ø10 MM WIRE  
WINCH DRUM SPEED \_\_\_\_\_ 140 RPM.  
APPROXIMATE HOIST SPEED \_\_\_\_\_ 1.5 METRES / SECOND  
FIRST LAYER PULL \_\_\_\_\_ 500 KG.  
TOP LAYER PULL \_\_\_\_\_ 340 KG.

#### HYDRAULIC INPUT REQUIRED TO SUIT AVERAGE WORKING SPEED:

INPUT FLOW \_\_\_\_\_ 36 LITRES/MIN.  
INPUT PRESSURE \_\_\_\_\_ 120 BAR

#### TYPICAL CHOICE OF ASSOCIATED EQUIPMENT

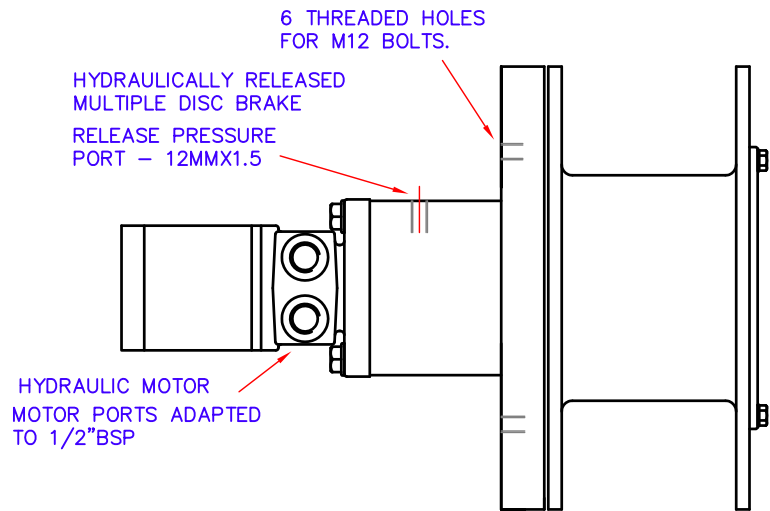
HYDRAULIC PUMP/CLUTCH UNIT \_\_\_\_\_ REF. 2P8 (36 LPM @ 1000 RPM)  
RESERVOIR \_\_\_\_\_ REF. R5 (25 LITRE CAPACITY)  
RETURN LINE FILTER \_\_\_\_\_ REF. F1  
CONTROL VALVE \_\_\_\_\_ REF. 2V  
HYDRAULIC HOSE SIZE \_\_\_\_\_ 1/2" BORE 2 WIRE REINFORCED

WEIGHT OF WINCH HEAD \_\_\_\_\_ APPROX. 30 KG.

CARGO/LANDING WINCH WITH OPTIONAL BRAKE.  
FOR FLANGE OR BULKHEAD MOUNTING.

THE WINCH IS SUITABLE FOR FLANGE OR BULKHEAD MOUNTING WITH THE BRAKE AND MOTOR ASSEMBLY PROJECTING ON THE REVERSE SIDE OF THE MOUNTING SURFACE.

THE HYDRAULICALLY RELEASED MULTIPLE DISC BRAKE WILL HOLD A STATIC LOAD OF UP TO 450 KG. AND IS RELEASED BY HYDRAULIC WORKING PRESSURE REACHING 32 BAR.



HYDRAULIC SUPPLY REQUIRED:

AN OPEN LOOP HYDRAULIC SUPPLY MUST BE PROVIDED WITH ADEQUATE LOAD CONTROL VALVE AND BRAKE RELEASE SHUTTLE AS SHOWN ON THIS CIRCUIT DIAGRAM.

