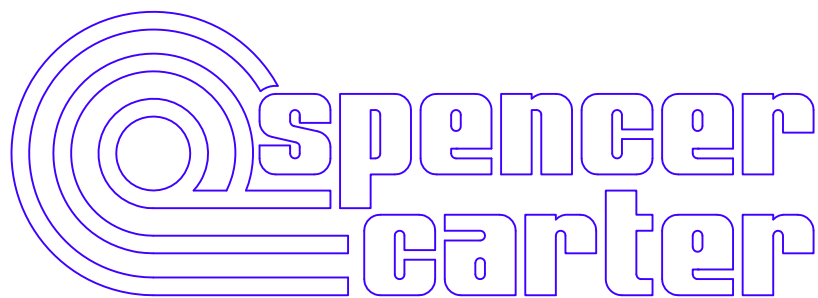
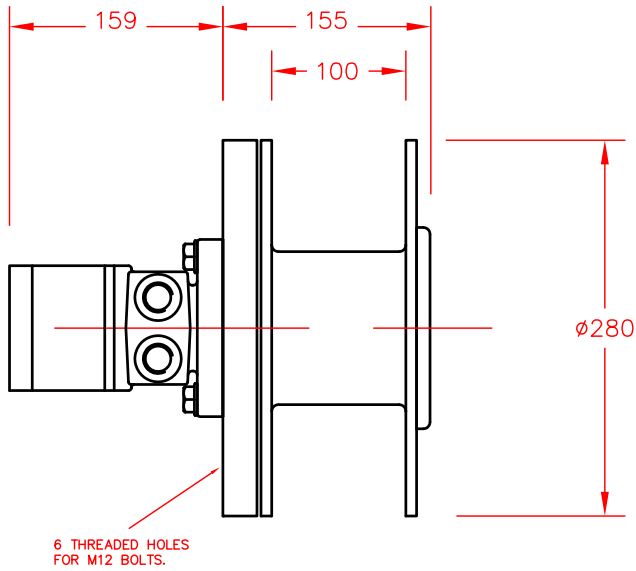


600 LB CARGO WINCH - CW2

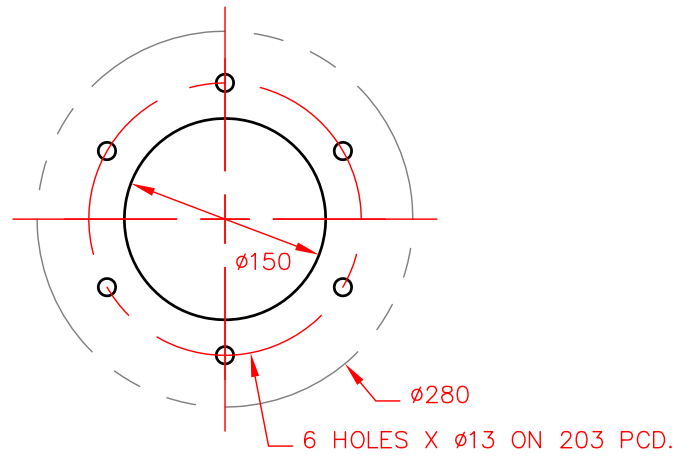


SPENCER CARTER LTD
TREGONIGGIE INDUSTRIAL ESTATE
FALMOUTH
CORNWALL
TR11 4SN
U.K.

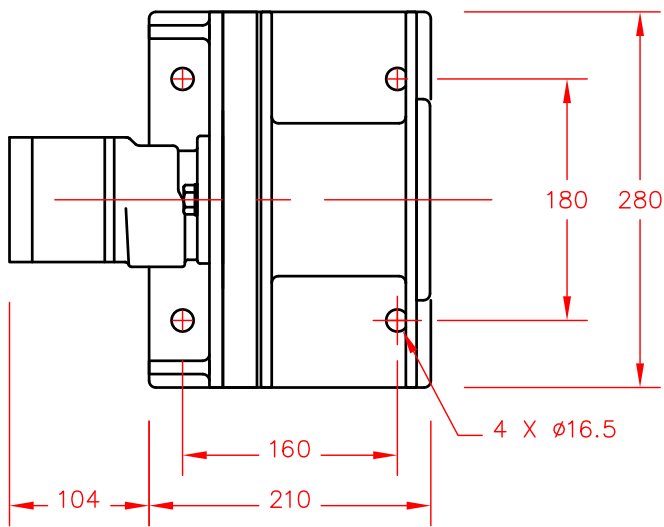
TEL. 01326 373423
FAX. 01326 373571



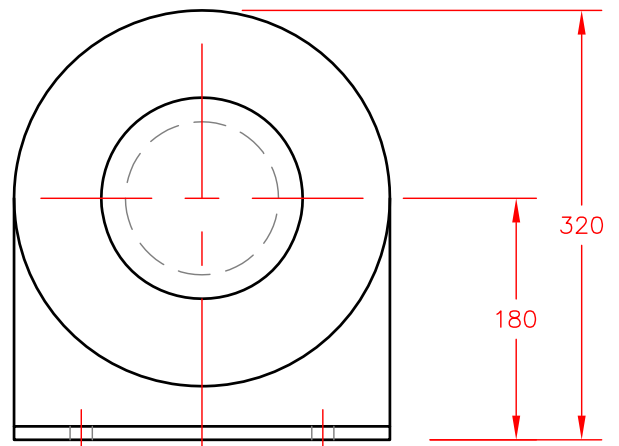
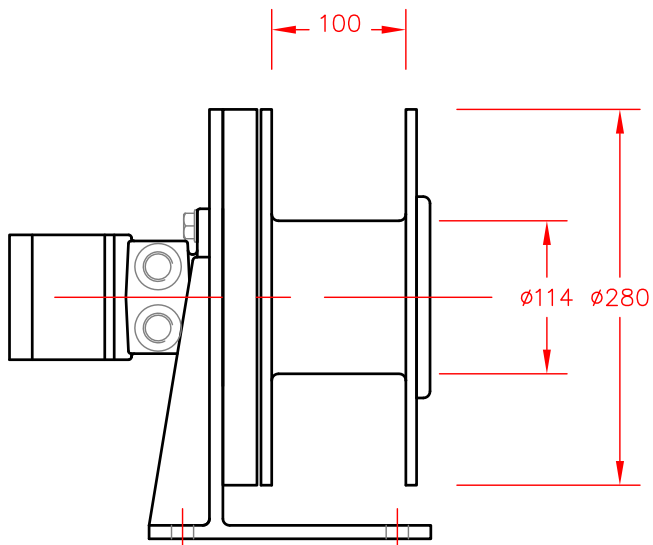
BASE MOUNTING PLAN FOR FLANGE MOUNTING.



STANDARD UNIT REF. CW2. (FLANGE MOUNTED)



ANGLED BASE MOUNTING REF. CB2. (SHOWN ASSEMBLED WITH WINCH UNIT CW2)



600 LB (300 KG.) CARGO HANDLING WINCH REF. CW2

The standard cargo winch is suitable for mounting against a plate or bulkhead with the hydraulic motor projecting from the reverse side of the mounting surface. An optional right angled base bracket is available for base mounting.

Substantial sealed bearings are provided for the winch drum. The hydraulic motor is not required to carry any side loading. Bearings are sealed and require no maintenance.

The base and bearing assembly are mainly aluminium for light weight. The winch drum is galvanised steel. The winch is finished painted in two part epoxy primer and top coat.

Working speeds quoted in the specification are generally suitable for cargo handling, fish boxes, and similar, from ship to quay side. The hydraulic supply can be modified for faster or slower working speeds.

The winch is intended for continuous operation, raising and lowering a load with intermittent support of a static load. Continuous support of a static load will cause the winch to creep, and the load will be gradually lowered.

600 LB. (300 KG.) CARGO HANDLING WINCH REF CW2

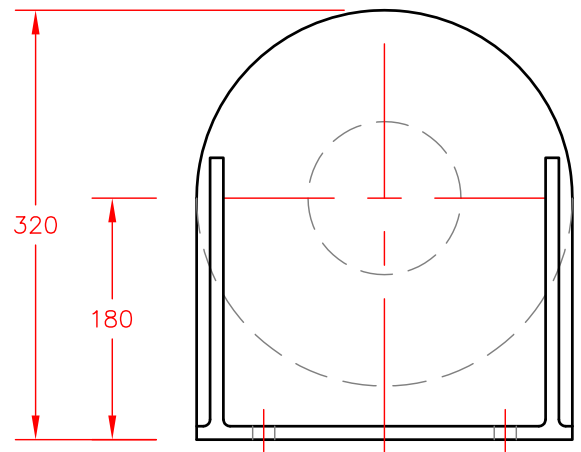
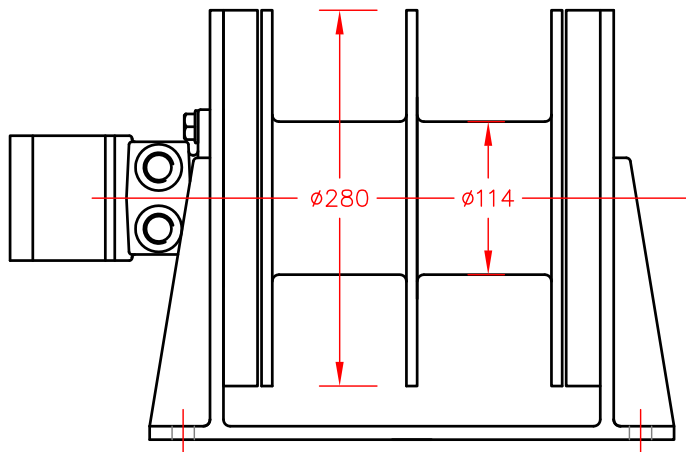
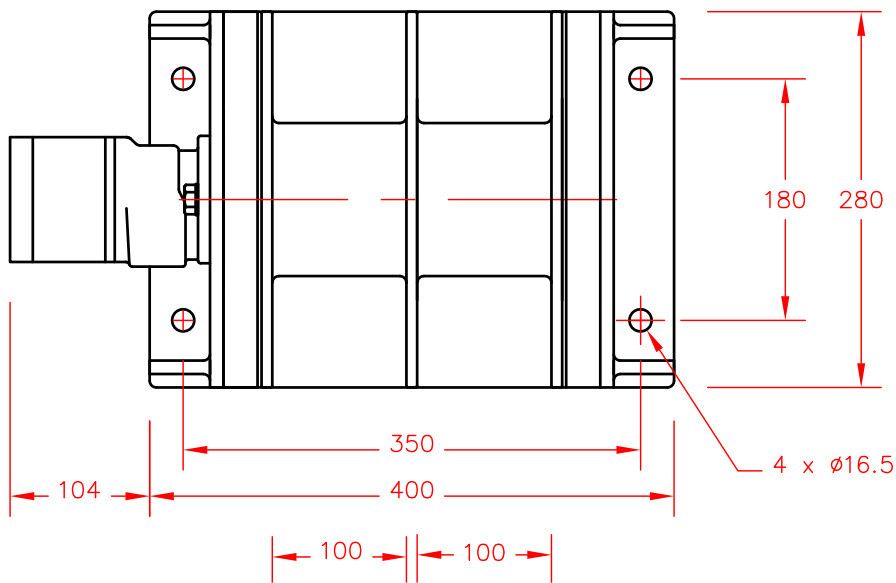
HYDRAULIC MOTOR SIZE _____ 163 CC/REV
MOTOR TORQUE _____ 250 NM.
WINCH DRUM CAPACITY _____ 30 METRES / Ø8 MM WIRE
WINCH DRUM SPEED _____ 130 RPM.
APPROXIMATE HOIST SPEED _____ 1 METRE / SECOND
FIRST LAYER PULL _____ 480 KG.
TOP LAYER PULL _____ 300 KG.

HYDRAULIC INPUT REQUIRED TO SUIT AVERAGE WORKING SPEED:

INPUT FLOW _____ 21 LITRES/MIN.
INPUT PRESSURE _____ 120 BAR

TYPICAL CHOICE OF ASSOCIATED EQUIPMENT

HYDRAULIC PUMP/CLUTCH UNIT _____ REF. 2P4.5 (20 LPM @ 1000 RPM)
RESERVOIR _____ REF. R2 (11 LITRE CAPACITY)
RETURN LINE FILTER _____ REF. F1
CONTROL VALVE _____ REF. 2V
HYDRAULIC HOSE SIZE _____ 1/2" BORE 2 WIRE REINFORCED
WEIGHT OF WINCH HEAD _____ APPROX. 25 KG.



600 LB BOOM SWINGER WINCH

HYDRAULIC MOTOR SIZE _____ 163 CC/REV
 MOTOR TORQUE _____ 250 NM.
 WINCH DRUM CAPACITY _____ 30 METRES/Ø8 MM WIRE (EACH)
 WINCH DRUM SPEED _____ 130 RPM.
 APPROXIMATE HOIST/SLEWING SPEED _____ 1 METRE / SECOND
 FIRST LAYER PULL _____ 480 KG.
 TOP LAYER PULL _____ 300 KG.

HYDRAULIC INPUT REQUIRED TO SUIT AVERAGE WORKING SPEED:

INPUT FLOW _____ 21 LITRES/MIN.
 INPUT PRESSURE _____ 120 BAR