

750 LB SLAVE POT/LINE HAULER - REF. CL2

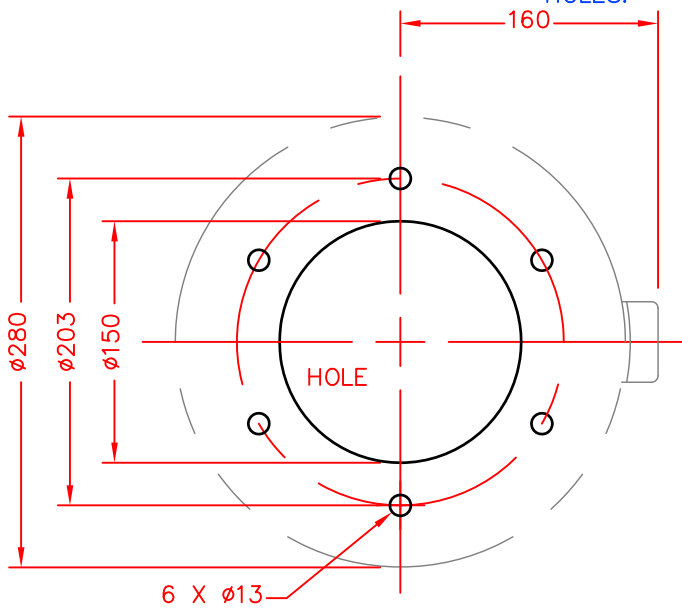
INCORPORATING REPLACEABLE WEAR PLATES



SPENCER CARTER LTD
TREGONIGGIE INDUSTRIAL ESTATE
FALMOUTH
CORNWALL
TR11 4SN
U.K.

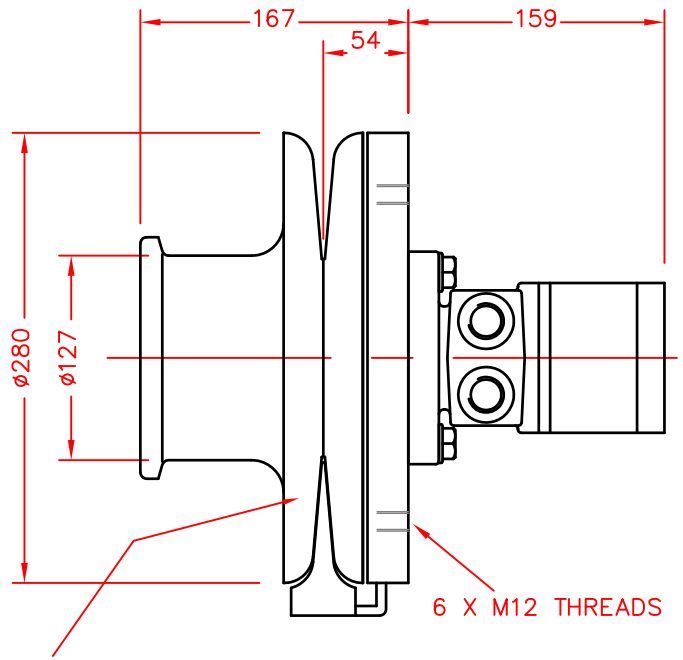
TEL. 01326 373423
FAX. 01326 373571
www.spencercarter.com
info@spencercarter.com

POSITION OF LINE
EJECTOR KNIFE IN
RELATION TO BOLT
HOLES.

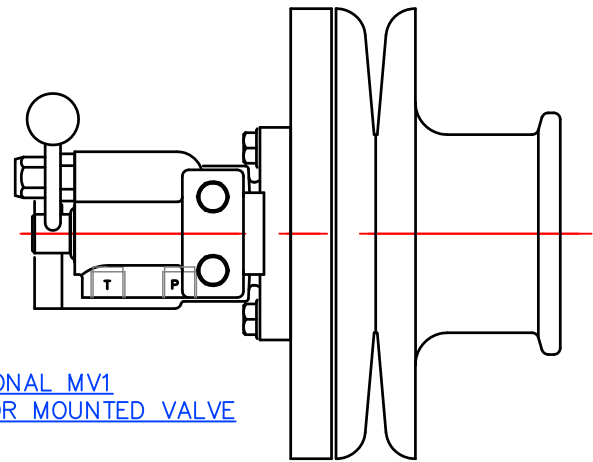


BASE MOUNTING PLAN

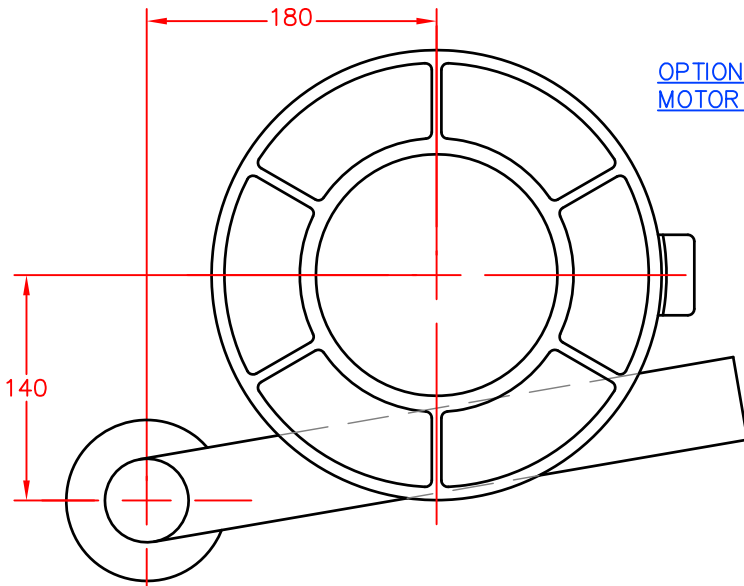
STANDARD HAULER CL2



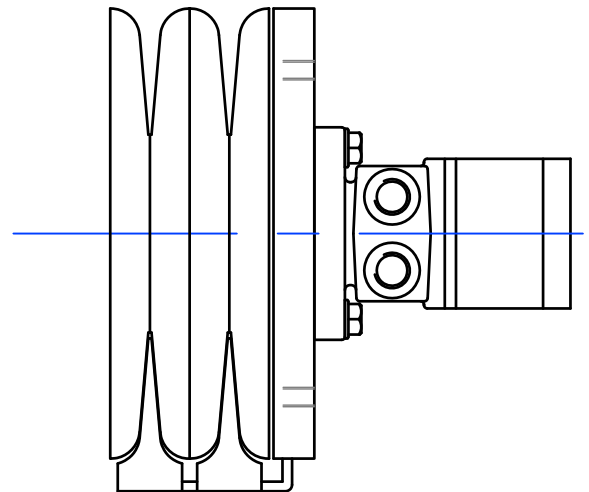
REPLACEABLE WEAR
PLATES



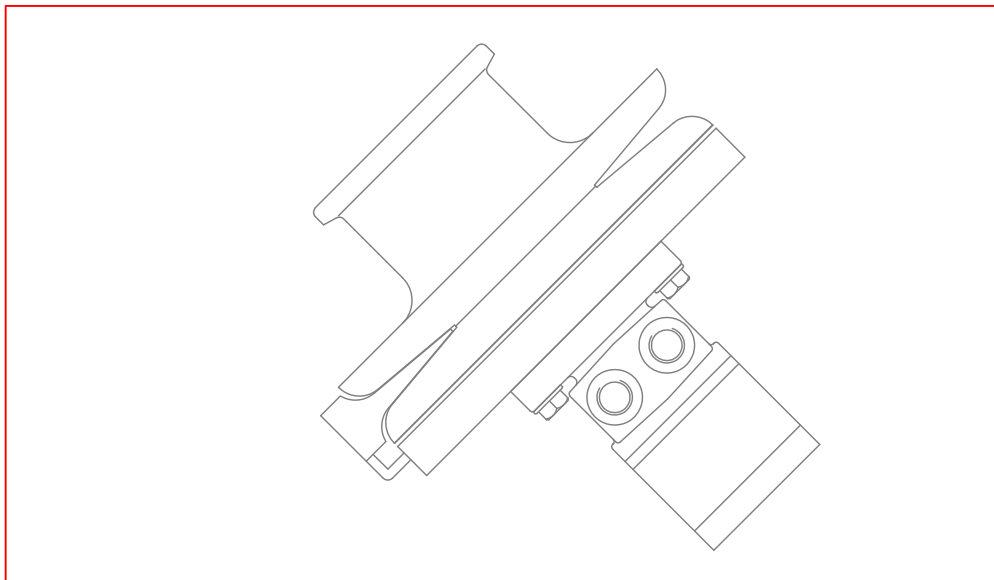
OPTIONAL MV1
MOTOR MOUNTED VALVE



OPTIONAL LINE KEEP LK1



DOUBLE SHEAVE HAULER CL2X



750 LB SLAVE POT/LINE HAULER – CL2

SUITABLE FOR POTTING USING 6 MM – 12 MM LINE SIZE

Wear Plates – Spun from Galvanised sheet steel

Line sheaves – Cast in S.G. iron grade 700/2

Warping drum – cast in S.G. iron grade 420/12

S.G. iron is a high grade, high strength material with superior resistance to wear and corrosion.

Ejector knife – Bronze, two sided and reversible.

Hydraulic motor – Low speed High torque Torqmotor.

Bearings – Two sealed ball races are incorporated in the design assembly, to carry the full radial working load of the hauler. Working loads are not imposed upon the hydraulic motor bearings.

Installation – Install into a console, bulkhead, or 'P' bracket. The line keep is an optional addition and is independantly fitted into the console or bulkhead face.

MOTOR SIZE 163 CC/REV
 MOTOR TORQUE 250 NM @ 120 BAR

HYDRAULIC INPUT REQUIRED TO SUIT AVERAGE WORKING SPEED: –

INPUT FLOW 4 GL/MIN. (18 LITRES/MIN.)
 INPUT PRESSURE 1800 PSI. (120 BAR)

AVERAGE WORKING SPEED 150 FT/MIN. (45 METRES/MIN.)
 MAXIMUM WORKING SPEED 300 FT/MIN. (90 METRES/MIN.)
 MAXIMUM LINE PULL (ON ø130) 750 LB (340 KG.)

TYPICAL CHOICE OF ASSOCIATED EQUIPMENT

HYDRAULIC PUMP/CLUTCH UNIT..... REF 2P4.5 (20 LITRES/MIN. @ 1000 RPM.)
 RESERVOIR REF R2 (11 LITRES CAPACITY)
 RETURN LINE FILTER REF F1
 CONTROL VALVE REF 2V (+ 2VC OPTIONAL), OR MV1
 HYDRAULIC HOSE 1/2" BORE 2 WIRE REINFORCED

WEIGHT OF HAULER HEAD 25 KG.

'P' BRACKET, & 'P' BRACKET/DAVITS ARE MANUFACTURE FROM STEEL & ARE HOT DIP GALVANISED. AS AN OPTION FOR WEIGHT SAVING, THEY CAN BE MADE FROM MARINE GRADE ALUMINIUM.

