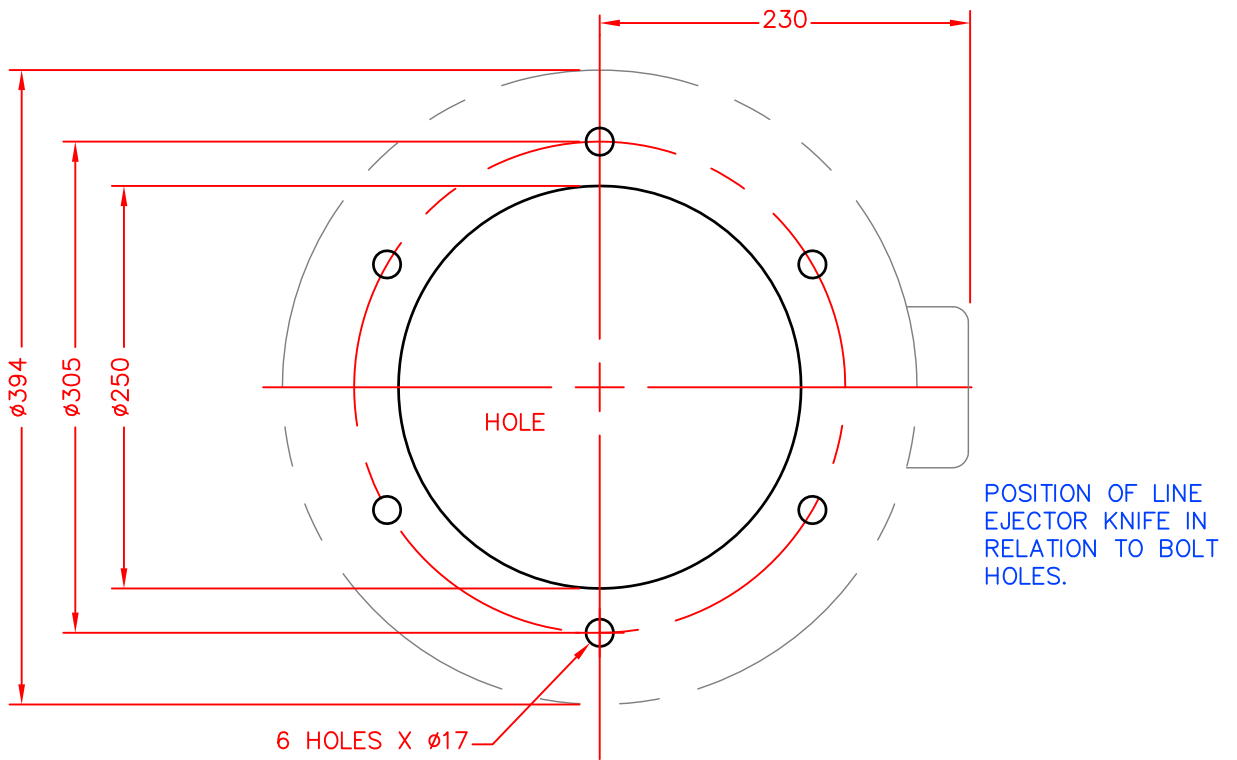
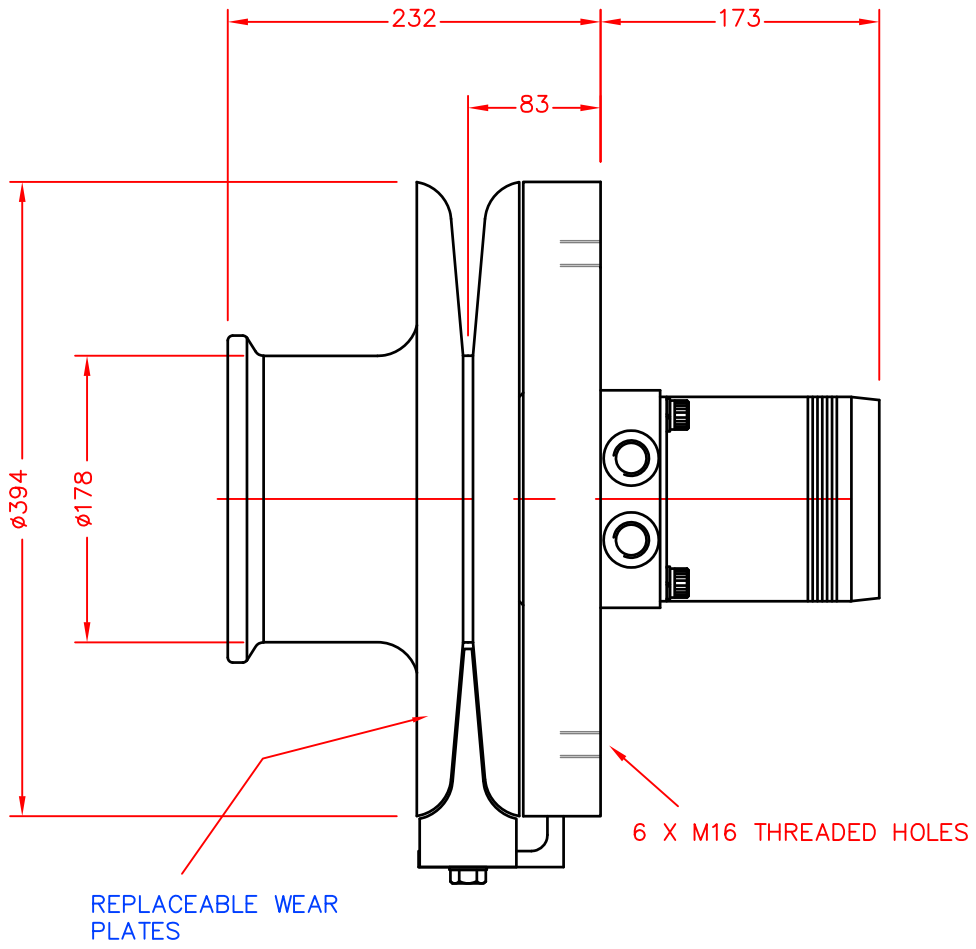


2000 LB SLAVE POT HAULER - REF. SP2F  
**INCORPORATING REPLACEABLE WEAR PLATES**

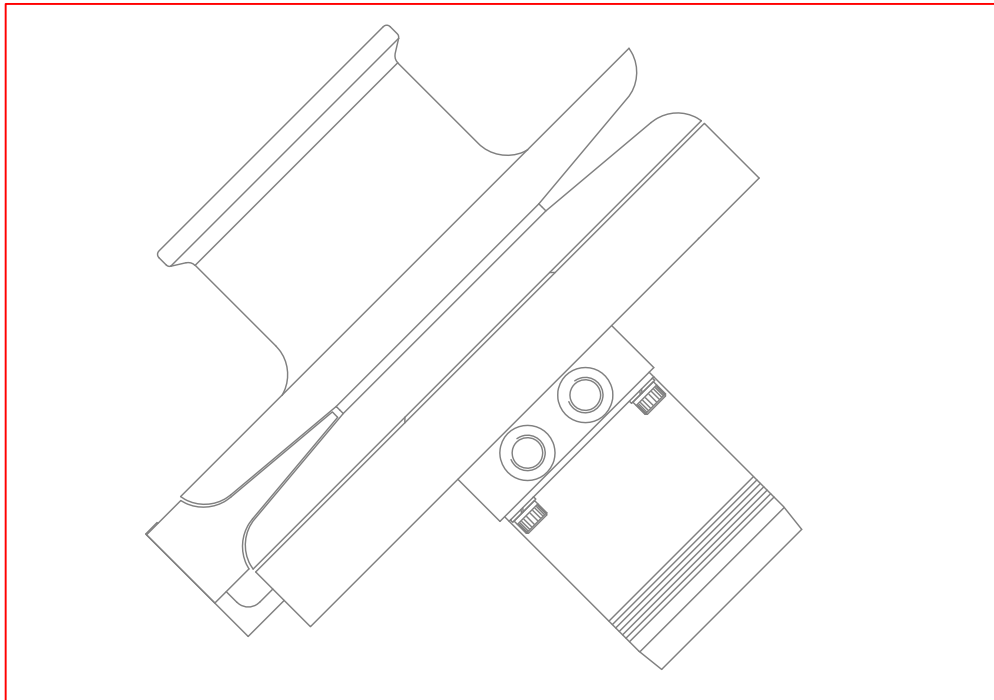


SPENCER CARTER LTD  
TREGONIGGIE INDUSTRIAL ESTATE  
FALMOUTH  
CORNWALL  
TR11 4SN  
U.K.

TEL. 01326 373423  
FAX. 01326 373571  
[www.spencercarter.com](http://www.spencercarter.com)  
[info@spencercarter.com](mailto:info@spencercarter.com)



BASE MOUNTING PLAN



2000 LB SLAVE POT HAULER – SP2F

SUITABLE FOR POTTING USING 10 MM – 16 MM LINE SIZE

Wear Plates – Spun from Galvanised sheet steel

Line sheaves – Cast in S.G. iron grade 700/2

Warping drum – cast in S.G. iron grade 420/12

S.G. iron is a high grade, high strength material with superior resistance to wear and corrosion.

Ejector knife – Bronze, two sided and reversible.

Hydraulic motor – Low speed, High Torque Torqmotor.

Bearings – Two sealed ball races are incorporated in the design assembly, to carry the full radial working load of the hauler.

Working loads are not imposed upon the hydraulic motor bearings.

Installation – Install into a console, bulkhead, or 'P' bracket.

The line keep is an optional addition and is independantly fitted into the console or bulkhead face.

MOTOR SIZE ..... 337 CC/REV  
 MOTOR TORQUE ..... 980 NM @ 200 BAR

HYDRAULIC INPUT REQUIRED TO SUIT AVERAGE WORKING SPEED: –

INPUT FLOW ..... 7 GL/MIN. (31 LITRES/MIN.)  
 INPUT PRESSURE ..... 3000 PSI. (200 BAR)

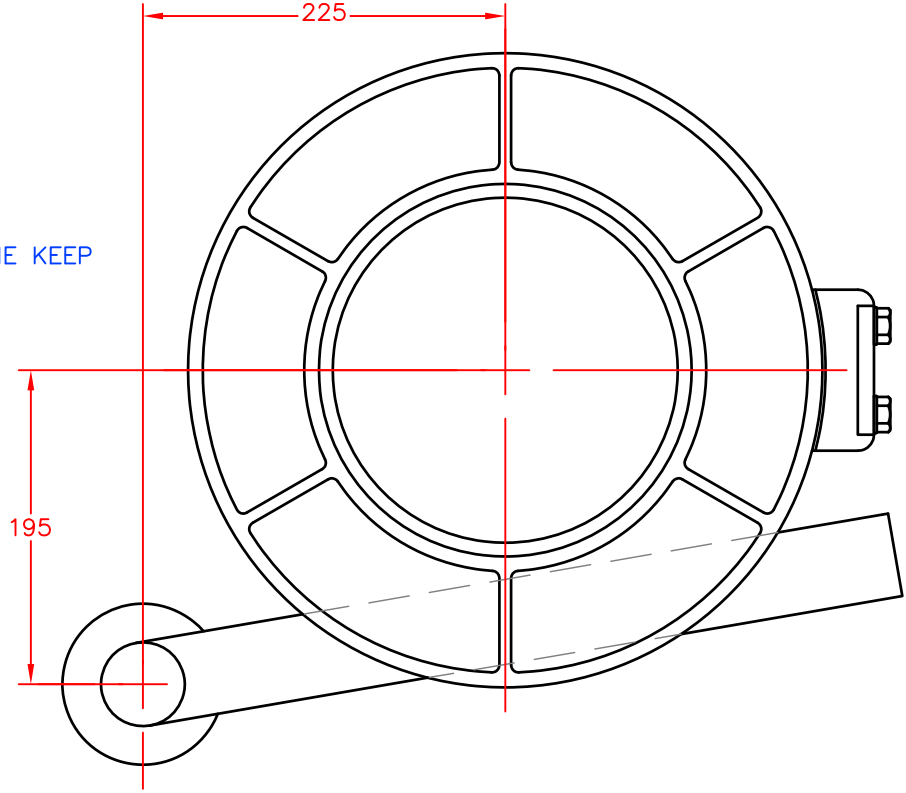
AVERAGE WORKING SPEED ..... 165 FT/MIN. (50 METRES/MIN.)  
 MAXIMUM WORKING SPEED ..... 330 FT/MIN. (100 METRES/MIN.)  
 MAXIMUM LINE PULL (ON ø178) ..... 2200 LB (990 KG.)

TYPICAL CHOICE OF ASSOCIATED EQUIPMENT

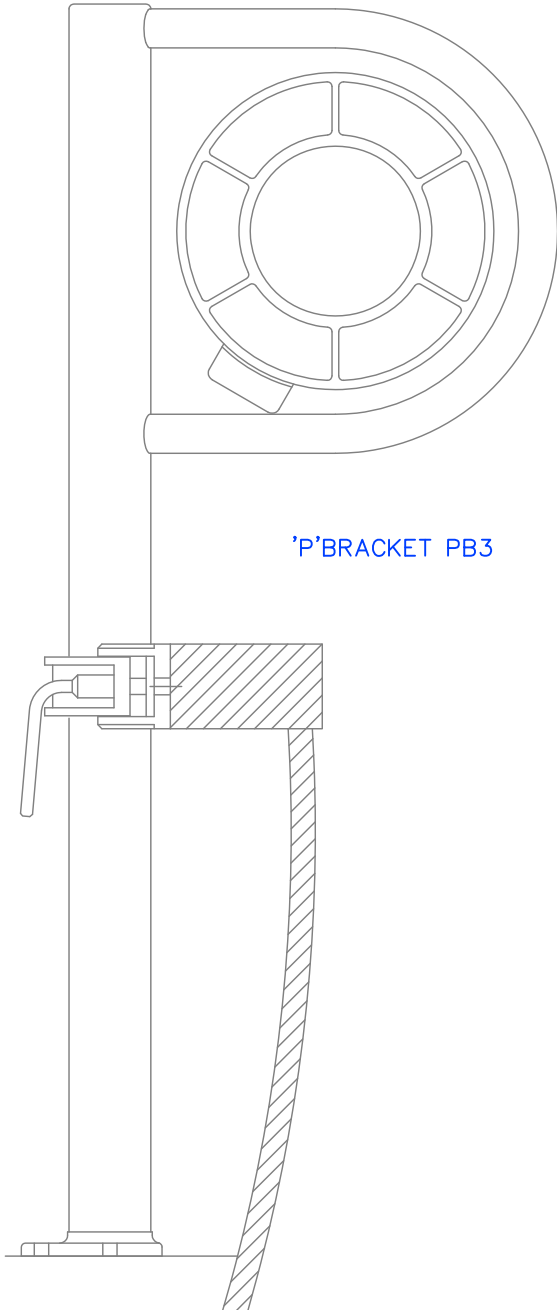
HYDRAULIC PUMP/CLUTCH UNIT..... REF 3P14 (63 LITRES/MIN. @ 1000 RPM.)  
 RESERVOIR ..... REF R18 (80 LITRES CAPACITY)  
 RETURN LINE FILTER ..... REF F2  
 CONTROL VALVE ..... REF 2V3 (+ 2VC OPTIONAL)  
 OIL COOLER (OPTIONAL)..... REF OC1  
 HYDRAULIC HOSE ..... 3/4" BORE 2 WIRE REINFORCED

WEIGHT OF HAULER HEAD ..... 65 KG.

OPTIONAL LINE KEEP  
REF LK3



'P'BRACKET PB3



CONSOLE

