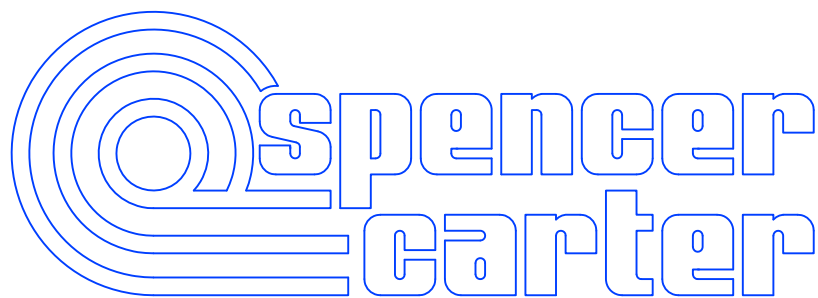


1400 LB SLAVE POT/LINE HAULER - REF. CL4

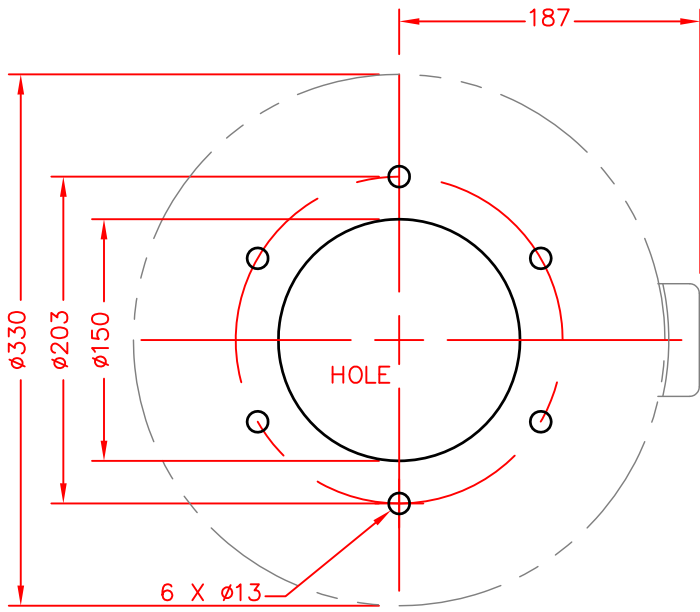
INCORPORATING REPLACEABLE WEAR PLATES



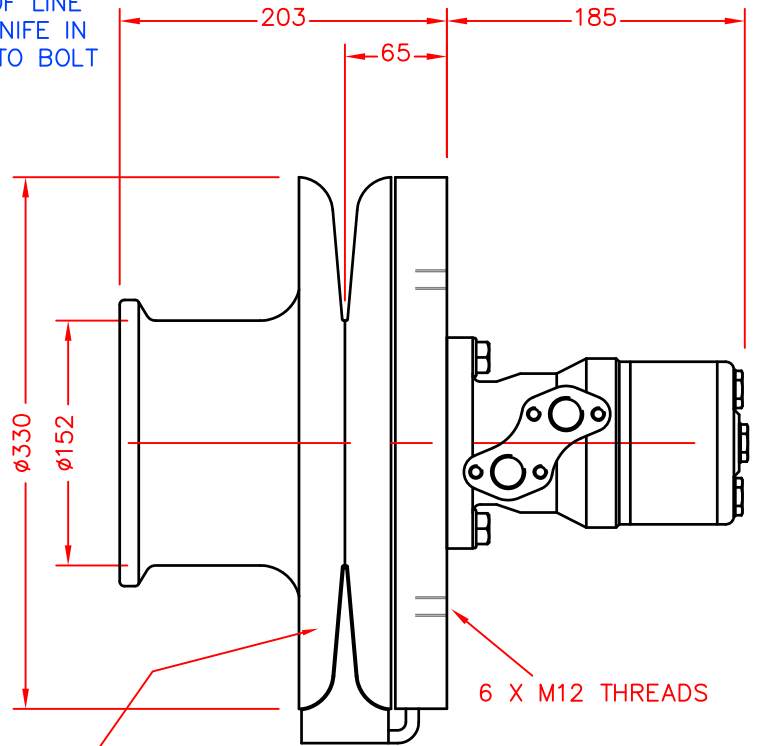
SPENCER CARTER LTD
TREGONIGGIE INDUSTRIAL ESTATE
FALMOUTH
CORNWALL
TR11 4SN
U.K.

TEL. 01326 373423
FAX. 01326 373571
www.spencercarter.com
info@spencercarter.com

POSITION OF LINE
EJECTOR KNIFE IN
RELATION TO BOLT
HOLES.

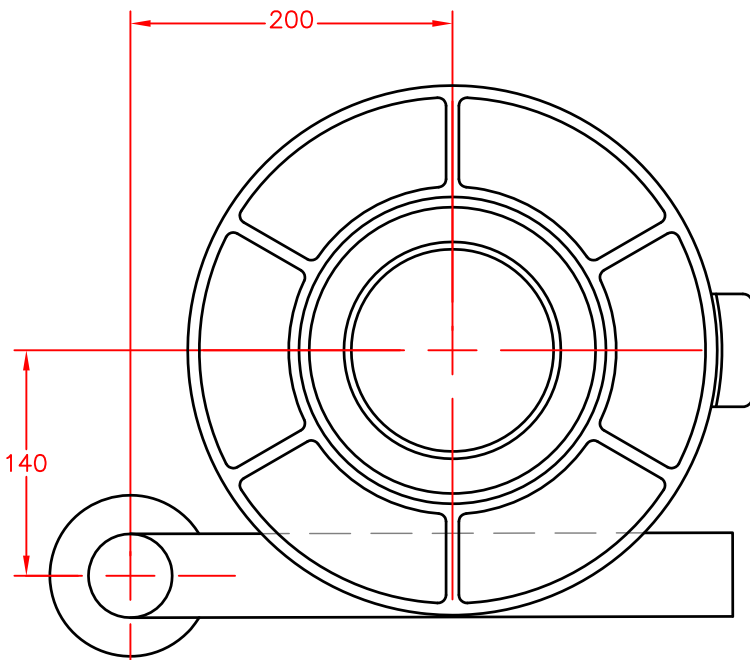


BASE MOUNTING PLAN

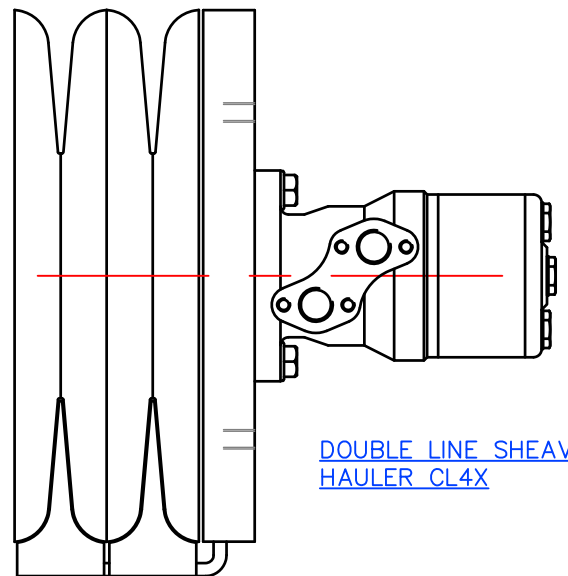


STANDARD HAULER CL4

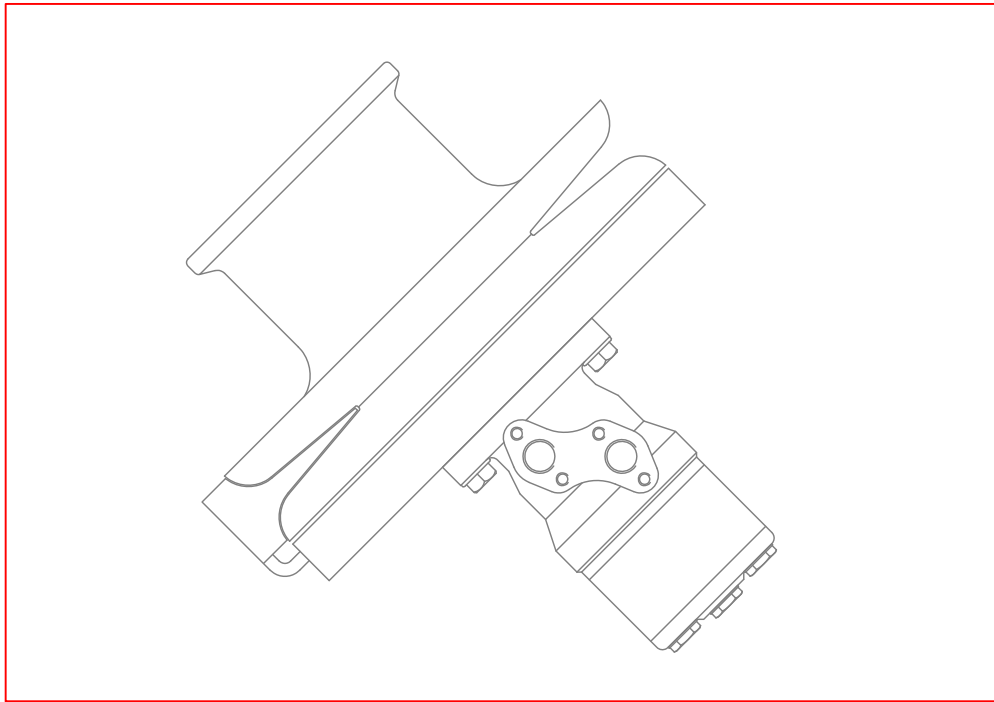
REPLACEABLE WEAR
PLATES



OPTIONAL LINE KEEP LK2



DOUBLE LINE SHEAVE
HAULER CL4X



1400 LB SLAVE POT/LINE HAULER – CL4

SUITABLE FOR POTTING USING 8 MM – 12 MM LINE SIZE

Wear Plates – Spun from Galvanised sheet steel

Line sheaves – Cast in S.G. iron grade 700/2

Warping drum – cast in S.G. iron grade 420/12

S.G. iron is a high grade, high strength material with superior resistance to wear and corrosion.

Ejector knife – Bronze, two sided and reversible.

Hydraulic motor – Low speed, high torque OMR series, by DANFOSS.

Bearings – Two sealed ball races are incorporated in the design assembly, to carry the full radial working load of the hauler.

Working loads are not imposed upon the hydraulic motor bearings.

Installation – Install into a console, bulkhead, or 'P' bracket.

The line keep is an optional addition and is independantly fitted into the 'P' Bracket/Davit, console or bulkhead face.

MOTOR SIZE 315 CC/REV
 MOTOR TORQUE 550 NM @ 140 BAR

HYDRAULIC INPUT REQUIRED TO SUIT AVERAGE WORKING SPEED: –

INPUT FLOW 6 GL/MIN. (27 LITRES/MIN.)
 INPUT PRESSURE 2000 PSI. (140 BAR)

AVERAGE WORKING SPEED 150 FT/MIN. (45 METRES/MIN.)
 MAXIMUM WORKING SPEED 300 FT/MIN. (90 METRES/MIN.)
 MAXIMUM LINE PULL (ON Ø130) 1400 LB (630 KG.)

TYPICAL CHOICE OF ASSOCIATED EQUIPMENT

HYDRAULIC PUMP/CLUTCH UNIT..... REF 2P10 (45 LITRES/MIN. @ 1000 RPM.)
 RESERVOIR REF R10 (45 LITRES CAPACITY)
 RETURN LINE FILTER REF F2
 CONTROL VALVE REF 2V (+ 2VC OPTIONAL)
 HYDRAULIC HOSE 1/2" BORE 2 WIRE REINFORCED

WEIGHT OF HAULER HEAD 39 KG.

'P' BRACKET, & 'P' BRACKET/DAVITS ARE MANUFACTURE FROM STEEL & ARE HOT DIP GALVANISED.

AS AN OPTION FOR WEIGHT SAVING, THEY CAN BE MADE FROM MARINE GRADE ALUMINIUM.

