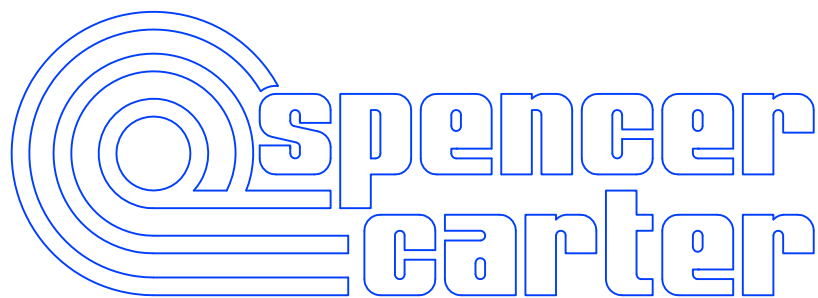


1000 LB SLAVE POT/LINE HAULER - REF. CL3

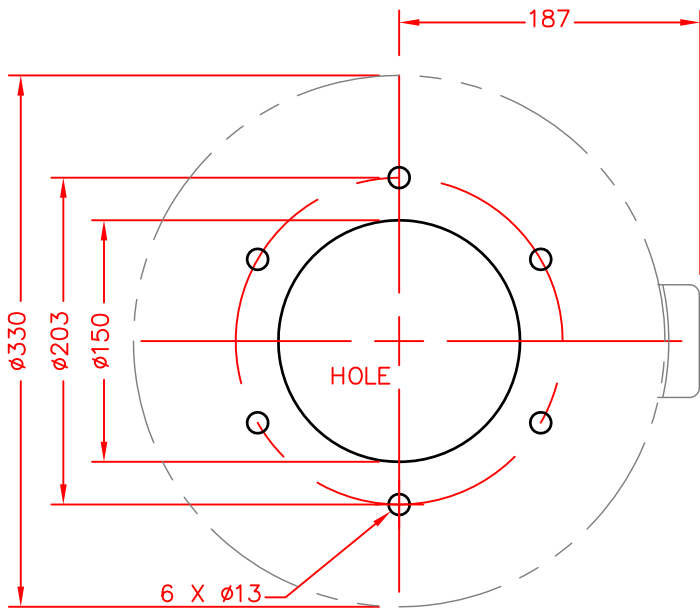
INCORPORATING REPLACEABLE WEAR PLATES



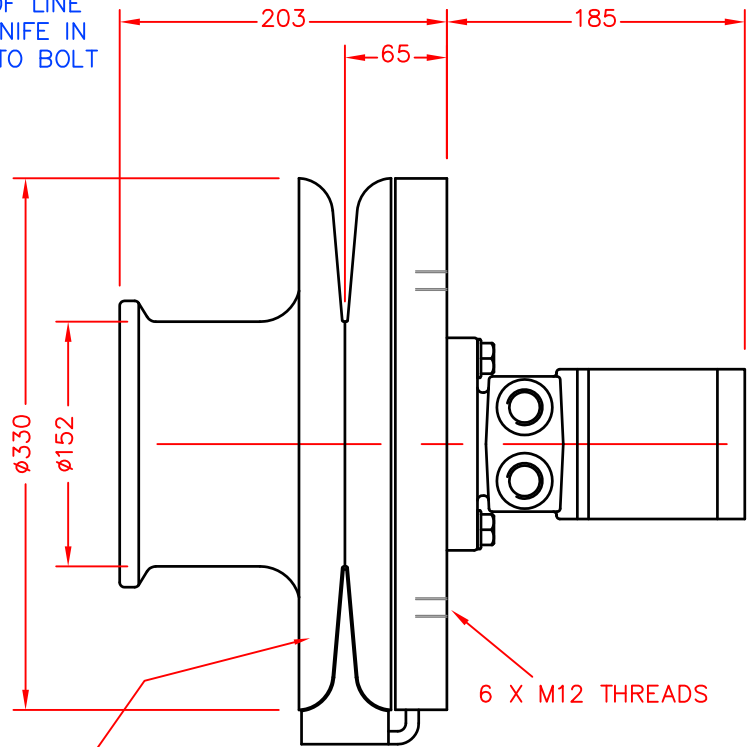
SPENCER CARTER LTD
TREGONIGGIE INDUSTRIAL ESTATE
FALMOUTH
CORNWALL
TR11 4SN
U.K.

TEL. 01326 373423
FAX. 01326 373571
www.spencercarter.com
info@spencercarter.com

POSITION OF LINE
EJECTOR KNIFE IN
RELATION TO BOLT
HOLES.



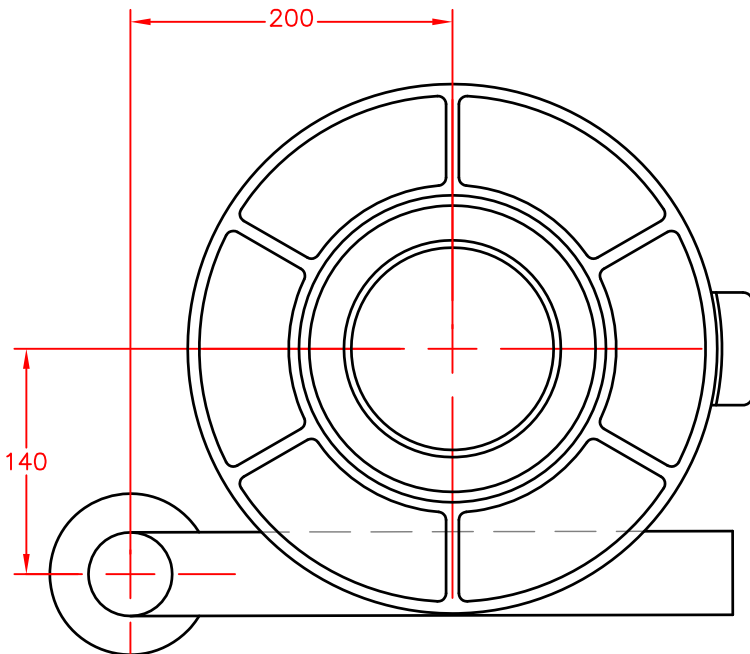
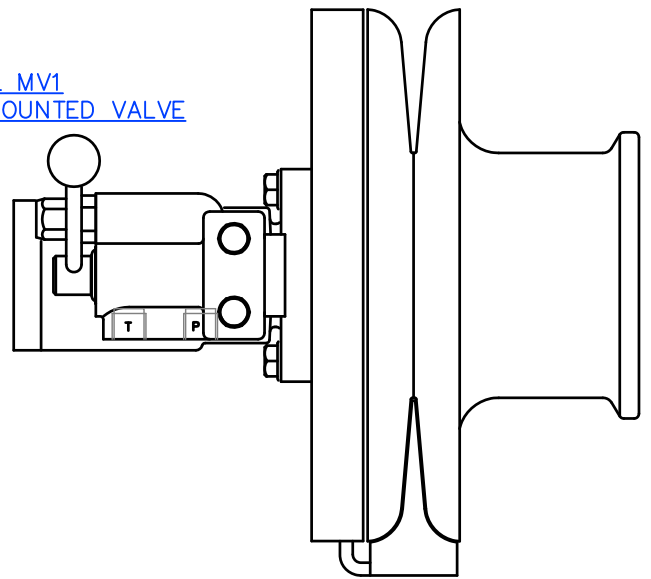
BASE MOUNTING PLAN



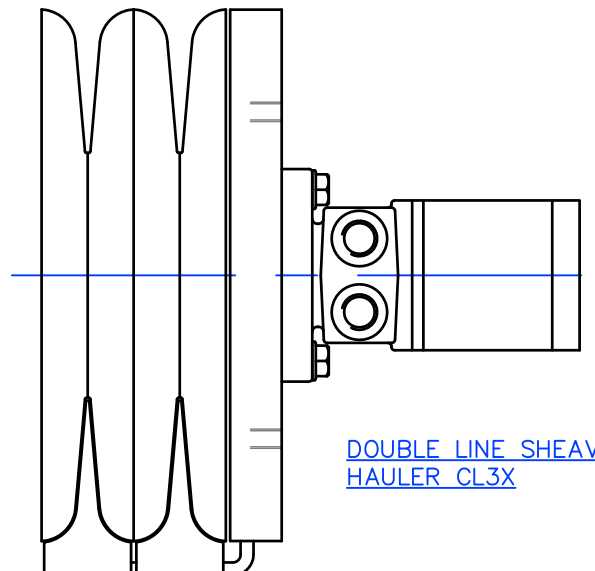
STANDARD HAULER CL3

REPLACEABLE WEAR
PLATES

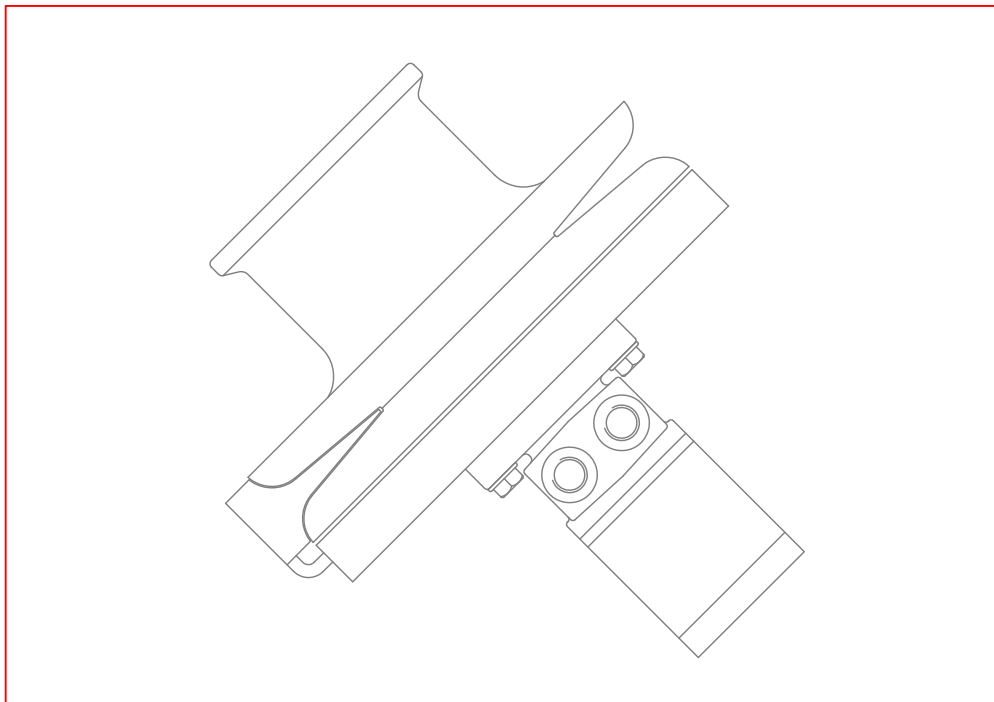
OPTIONAL MV1
MOTOR MOUNTED VALVE



OPTIONAL LINE KEEP LK2



DOUBLE LINE SHEAVE
HAULER CL3X



1000 LB SLAVE POT/LINE HAULER – CL3

SUITABLE FOR POTTING USING 8 MM – 12 MM LINE SIZE

Wear Plates – Spun from Galvanised sheet steel

Line sheaves – Cast in S.G. iron grade 700/2

Warping drum – cast in S.G. iron grade 420/12

S.G. iron is a high grade, high strength material with superior resistance to wear and corrosion.

Ejector knife – Bronze, two sided and reversible.

Hydraulic motor – Low speed high torque, Torqmotor

Bearings – Two sealed ball races are incorporated in the design assembly, to carry the full radial working load of the hauler.

Working loads are not imposed upon the hydraulic motor bearings.

Installation – Install into a console, bulkhead, or 'P' bracket.

The line keep is an optional addition and is independantly fitted into the 'P' Bracket/Davit, console or bulkhead face.

MOTOR SIZE 293 CC/REV
 MOTOR TORQUE 430 NM @ 120 BAR

HYDRAULIC INPUT REQUIRED TO SUIT AVERAGE WORKING SPEED: –

INPUT FLOW 5 GL/MIN. (23 LITRES/MIN.)
 INPUT PRESSURE 1800 PSI. (120 BAR)

AVERAGE WORKING SPEED150 FT/MIN. (45 METRES/MIN.)
 MAXIMUM WORKING SPEED300 FT/MIN. (90 METRES/MIN.)
 MAXIMUM LINE PULL (ON ø152).....1000 LB (455 KG.)

TYPICAL CHOICE OF ASSOCIATED EQUIPMENT

HYDRAULIC PUMP/CLUTCH UNIT REF 2P8 (36 LITRES/MIN. @ 1000 RPM.)
 RESERVOIR REF R5 (23 LITRES CAPACITY)
 RETURN LINE FILTER..... REF F1
 CONTROL VALVE REF 2V (+ 2VC OPTIONAL), OR MV1
 HYDRAULIC HOSE 1/2" BORE 2 WIRE REINFORCED

WEIGHT OF HAULER HEAD..... 39 KG.

'P' BRACKET, & 'P' BRACKET/DAVITS ARE MANUFACTURE FROM STEEL & ARE HOT DIP GALVANISED.
AS AN OPTION FOR WEIGHT SAVING, THEY CAN BE MADE FROM MARINE GRADE ALUMINIUM.

