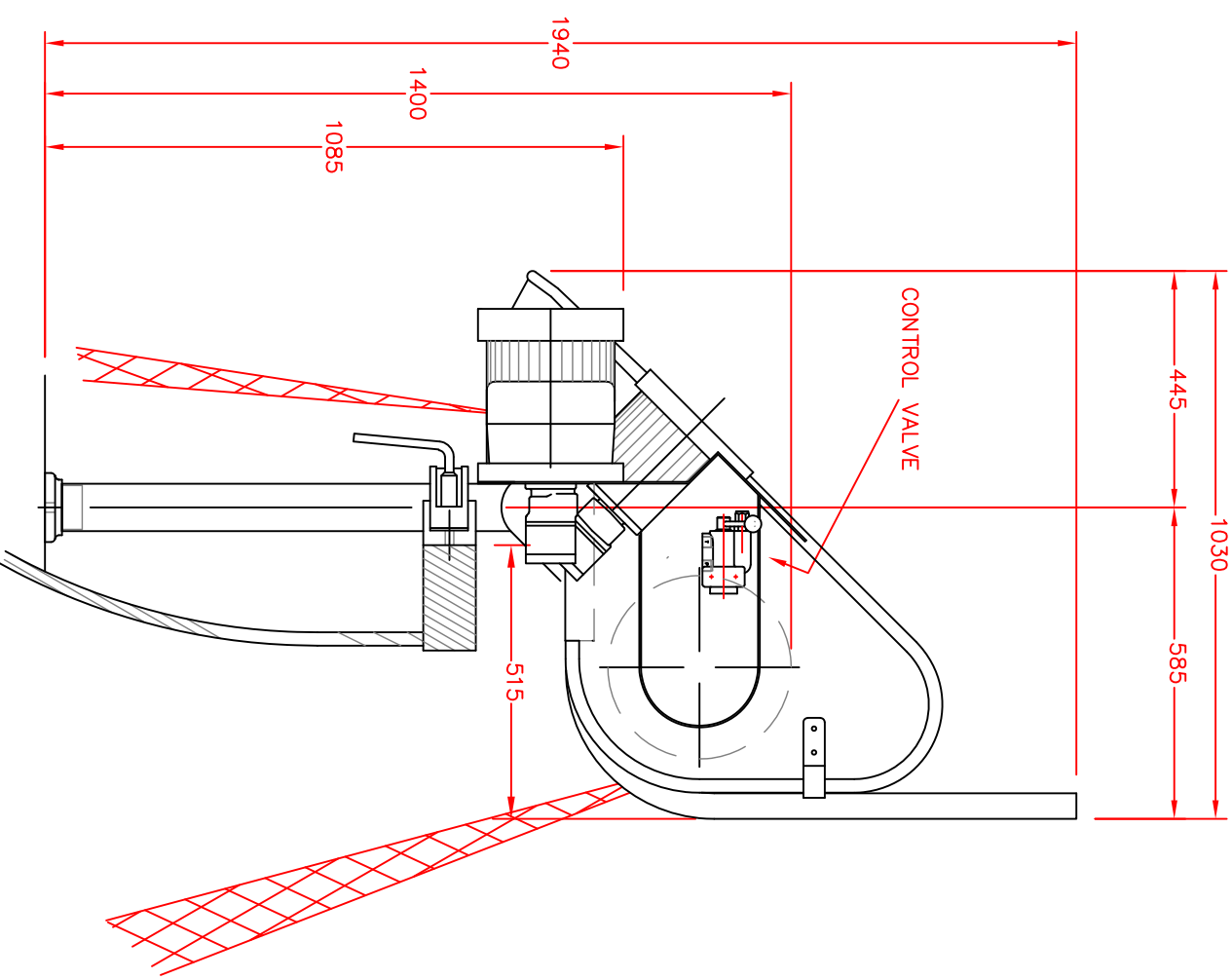
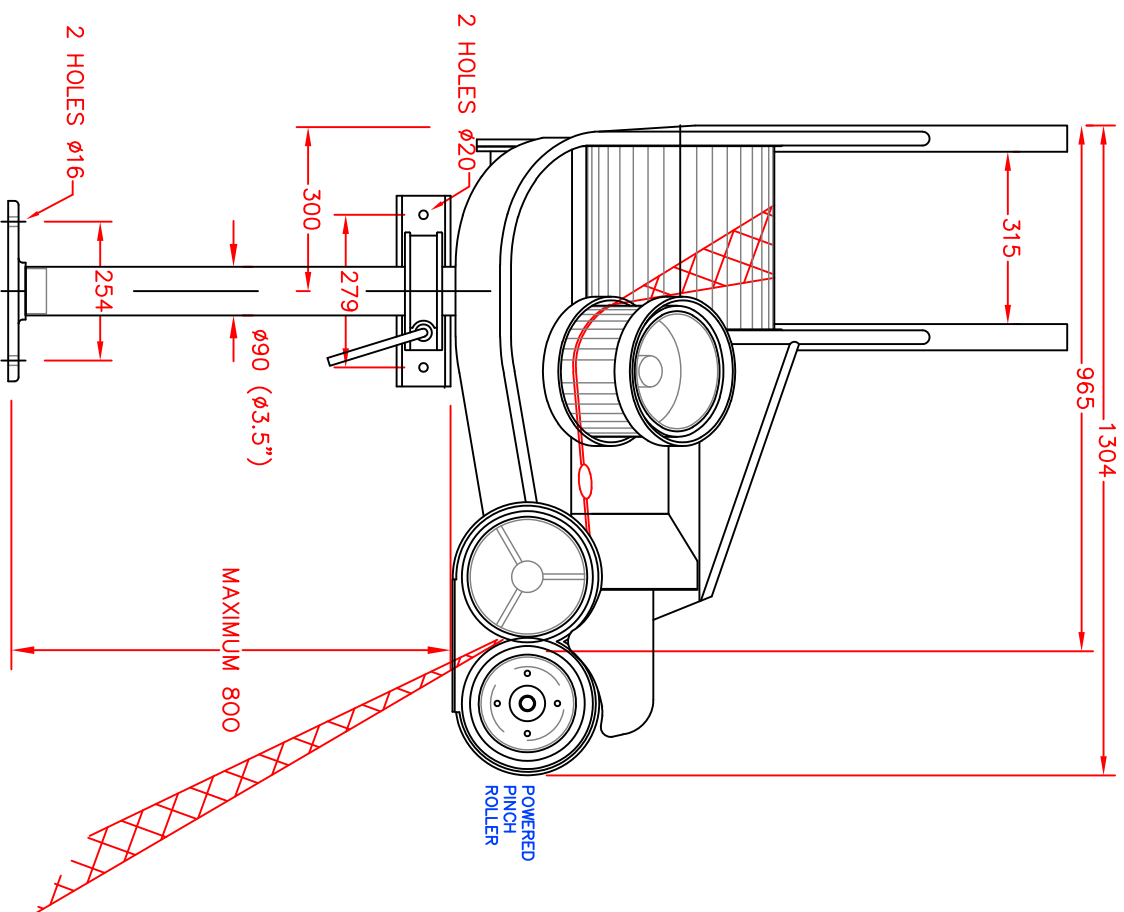
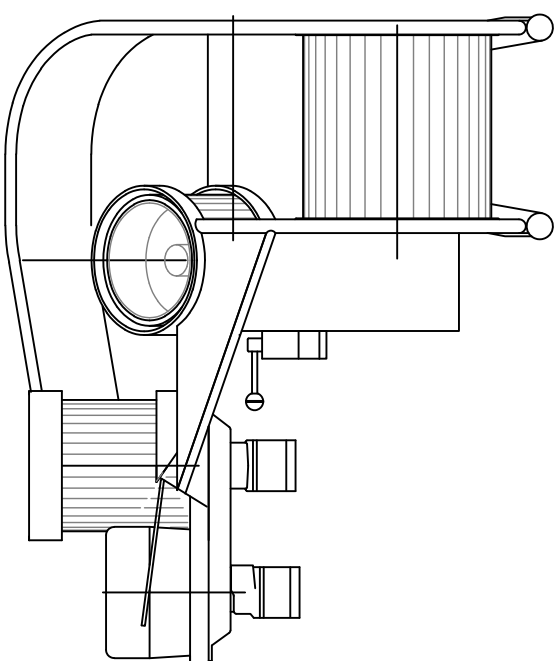
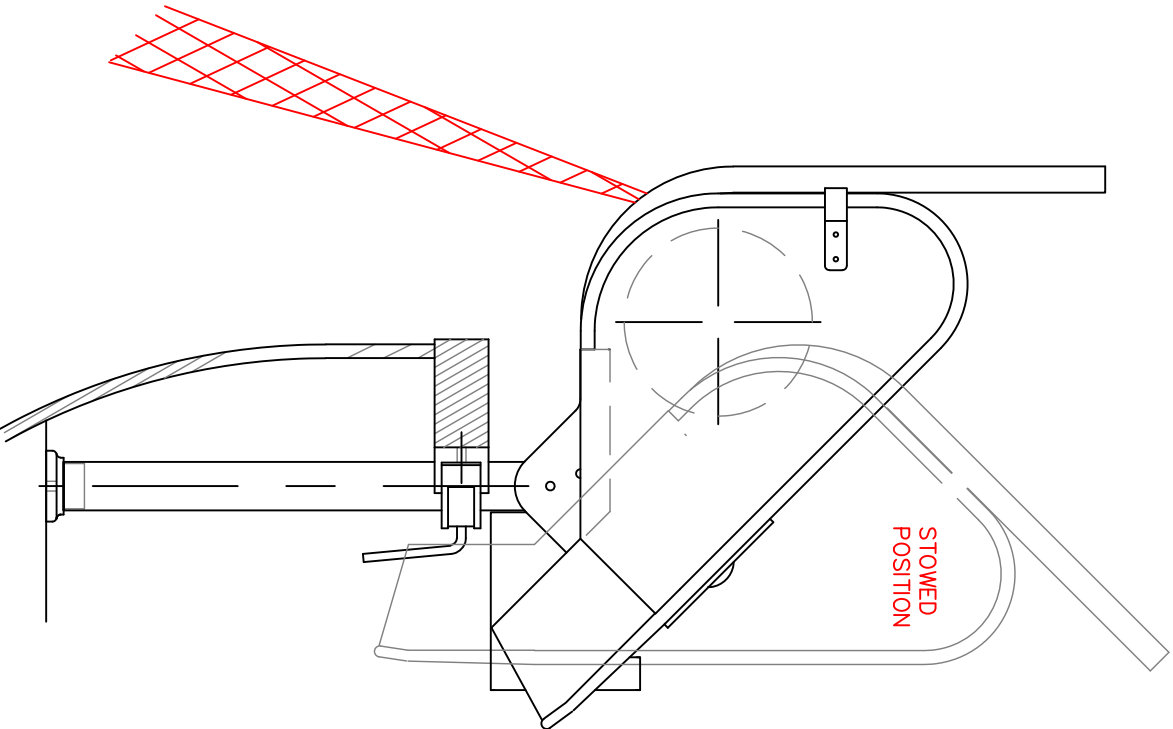


STANDARD PERFORMANCE SPECIFICATION.

AVERAGE RETRIEVE SPEED _____ 60 METRES/MIN
 MAXIMUM RETRIEVE SPEED _____ 120 METRES/MIN
 WEIGHT _____ APPROX. 125 KG.

HYDRAULIC SUPPLY REQUIRED

FLOW RATE _____ 24 LPM
 WORKING PRESSURE _____ 104 BAR



TYPICAL CHOICE OF ASSOCIATED EQUIPMENT
 HYDRAULIC PUMP _____ REF 2P8 (36 LPM/1000 RPM)
 RESERVOIR _____ REF R5 (25 LITRES)
 RETURN LINE FILTER _____ REF F1
 HYDRAULIC PIPE SIZE _____ REF 1/2"BORE 2 WIRE
 HYDRAULIC OIL _____ HLP 46

ENGINE POWER REQUIRED WILL BE 13 HP
 AT 1000 RPM. A SATISFACTORY WORKING SPEED
 WILL BE AT APPROX. 700 RPM

ALTERATIONS

DATE

ALTERATIONS

DATE

SCALE

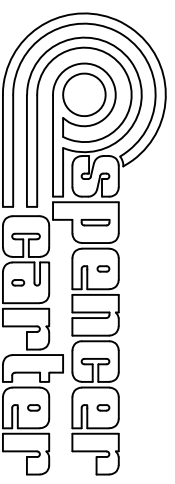
DRN.

M.J.S.

1:14

DATE

04.07.18



TITLE
 NET HAULER NHO-04

SPENCER CARTER LTD.
 FALMOUTH, CORNWALL, U.K.
 TEL. (01326) 373423
 FAX. (01326) 373571

DRG.NO.

623-988