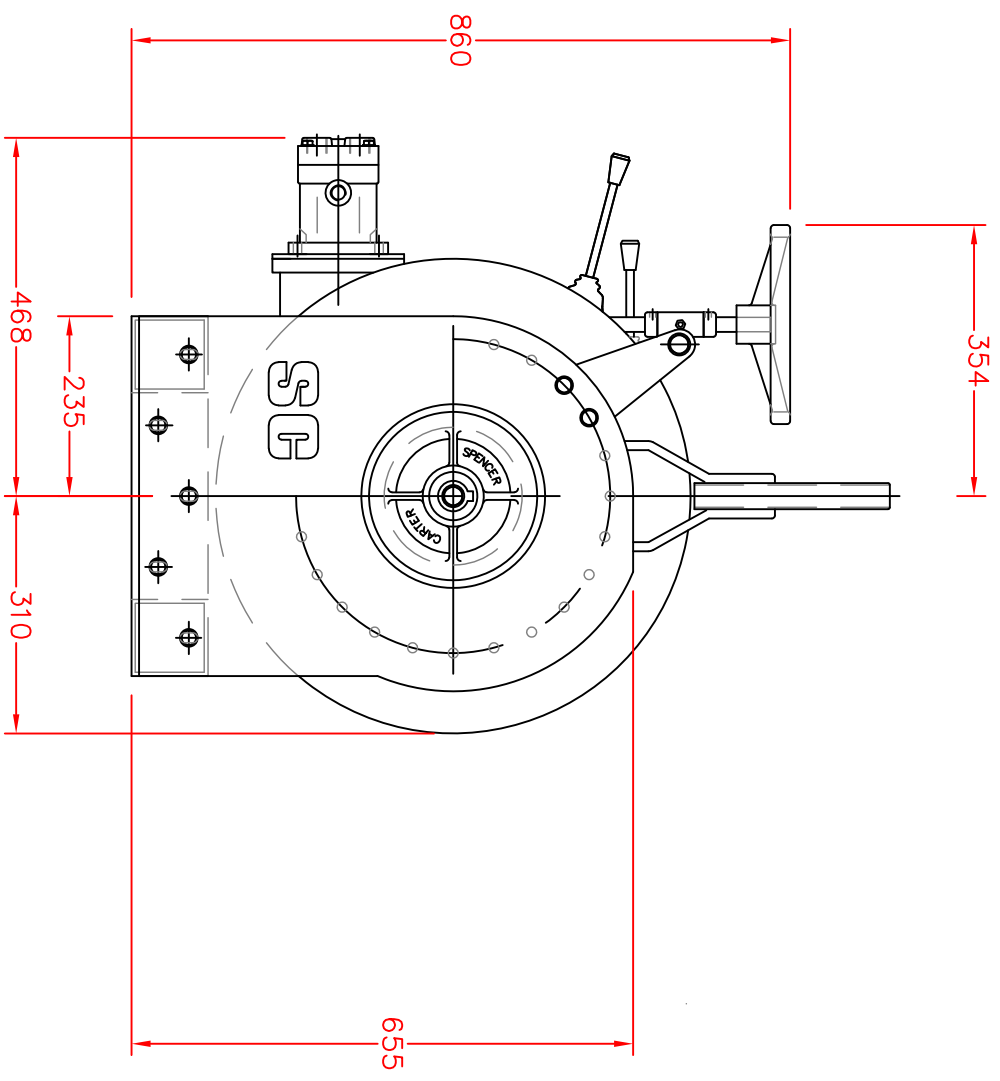
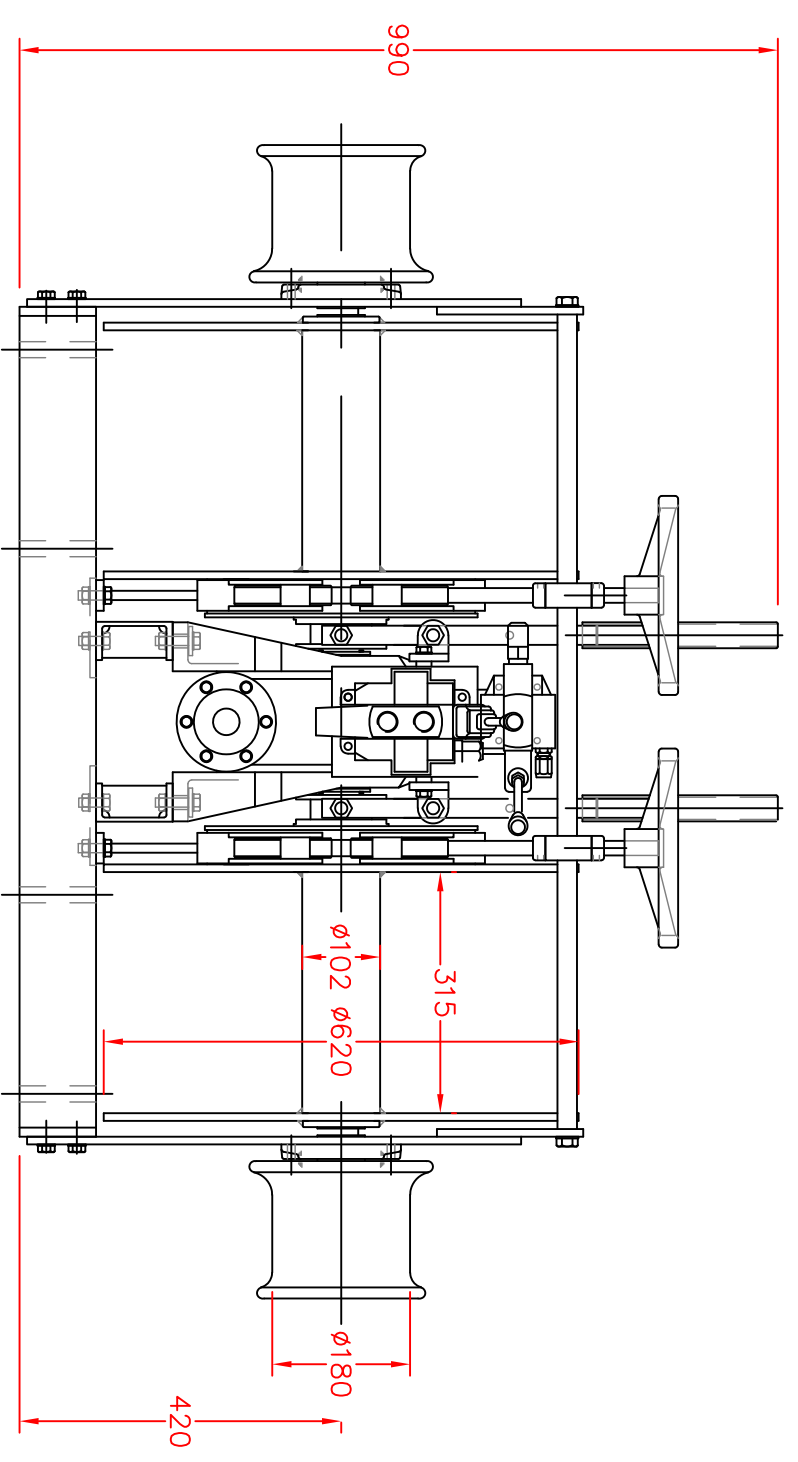
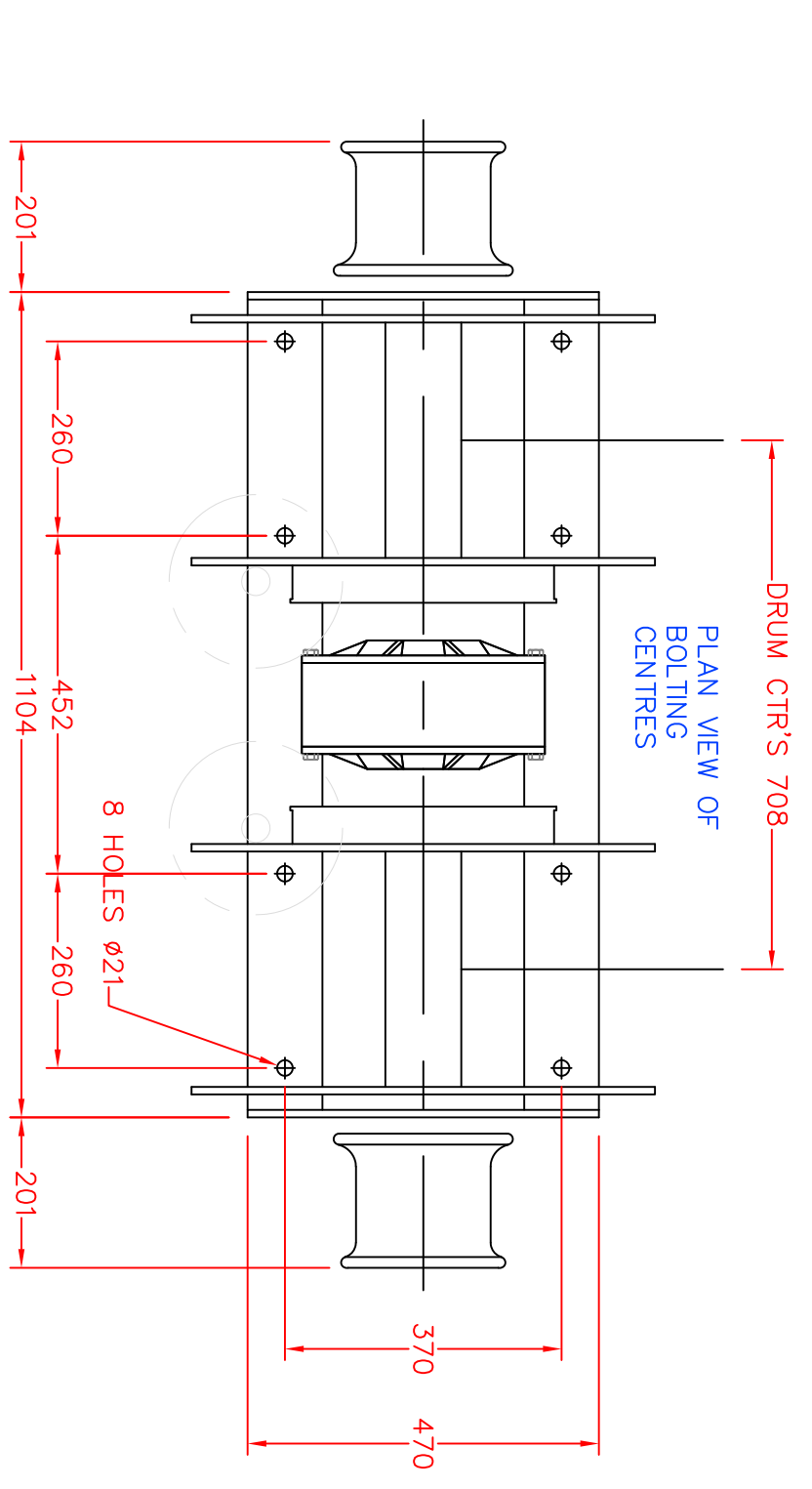


PLAN VIEW OF
BOLTING
CENTRES

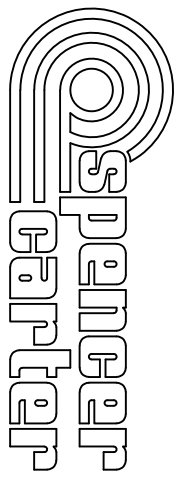


HYDRAULIC SUPPLY REQUIRED _____ 64 LPM. @ 140 BAR
THIS WILL BE AVAILABLE WITH PUMP SIZE 3P14 AND AN ENGINE
SPEED OF 1000 RPM.
WINCH SPEED _____ 50 RPM
WINCH TORQUE _____ 2000 NM

FIRST LAYER WIRE SPEED _____ 16 METRES/MINUTE
MID LAYER WIRE SPEED _____ 45 METRES/MINUTE
TOP LAYER WIRE SPEED _____ 70 METRES/MINUTE
WINCH PULL FIRST LAYER _____ 4.0 TONS
MID LAYER _____ 1.2 TONS
TOP LAYER _____ .8 TONS

WIRE CAPACITY TO TOP LAYER _____ 900M X 10 MM WIRE
THE TOP LAYER IS CALCULATED TO HAVE FILLED THE OVERSIZE WINCH
DRUM TO Ø580.

APPROX. WEIGHT.....500 KG. EX WIRE

ALTERATIONS	DATE	ALTERATIONS	DATE	MATERIAL	MACHINING TOLERANCES		TITLE	DRG.NO.	
				FINISH	ONE DEC. PLACE (0) = ±.15mm TWO DEC. PLACE (00) = ±.05mm		3/4 TON TRAWL WINCH TW2 MK3 SPENCER CARTER LTD. FALMOUTH, CORNWALL, U.K. TEL. (01326) 373423 FAX. (01326) 373571		
				SCALE	NO DEC. PLACE = ±.4mm				
				DRN.	UNLESS OTHERWISE STATED				
				A/M					