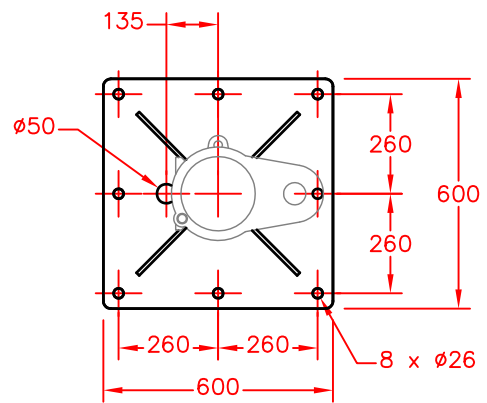
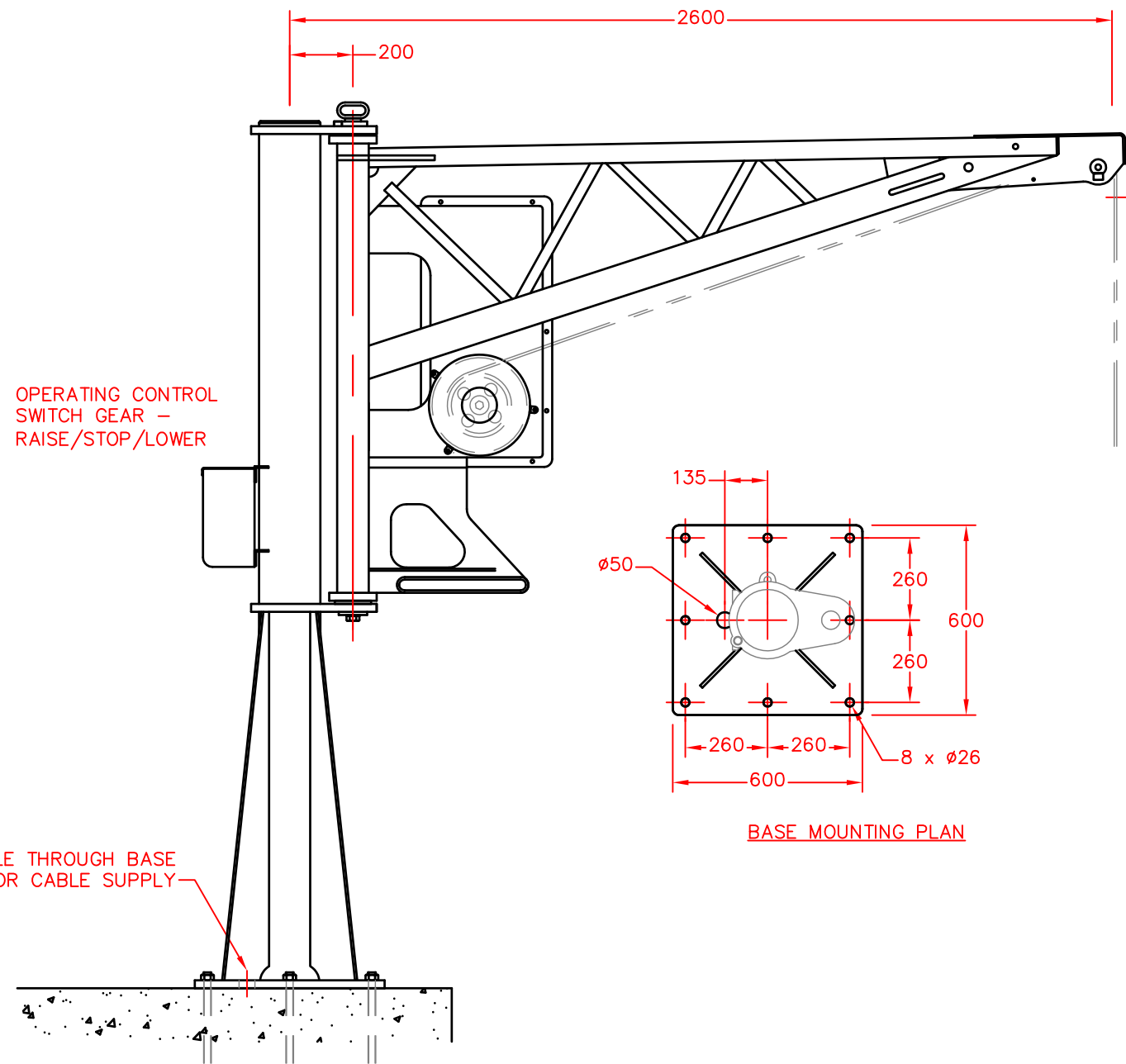
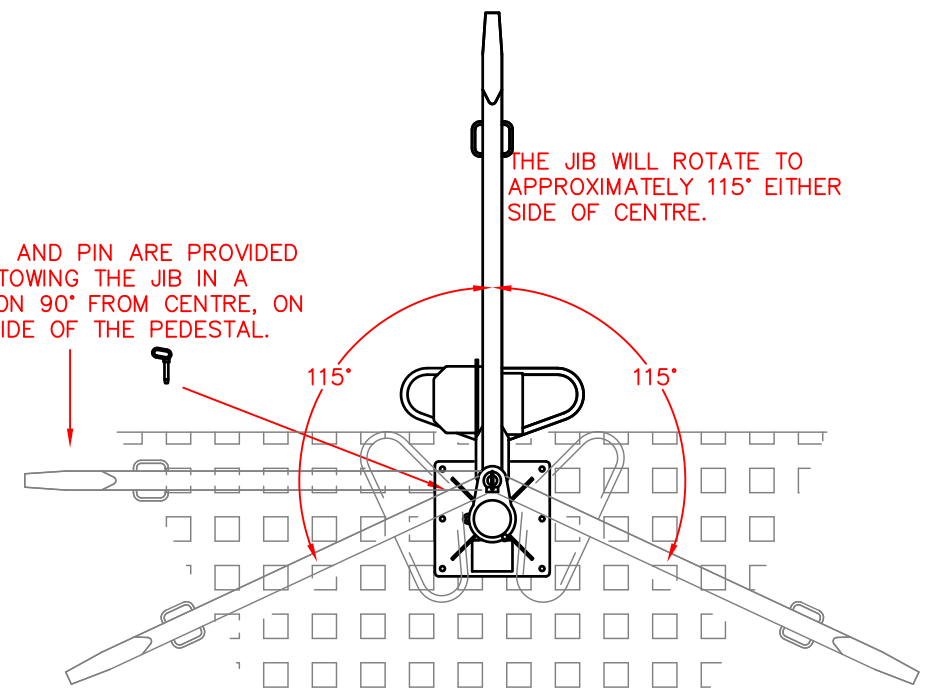


A LINK AND PIN ARE PROVIDED FOR STOWING THE JIB IN A POSITION 90° FROM CENTRE, ON THIS SIDE OF THE PEDESTAL.



BASE MOUNTING PLAN

SEALED COVER TOTALLY ENCLOSES THE MOTOR, BRAKE AND GEARBOX ASSEMBLY.

**500 KG. UNLOADING WINCH AND DAVIT.**

SUITABLE FOR QUAYSIDE INSTALLATION FOR THE LIFTING OF FISH BOXES FROM VESSEL TO SHORE.

DESIGNED FOR THE MARINE ENVIRONMENT WITH AN ALL WELDED STEEL CONSTRUCTION, FINISHED GALVANISED, WITH A TOTALLY ENCLOSED COMPARTMENT FOR THE ELECTRIC MOTOR, FAILSAFE BRAKE AND GEARBOX AND WITH SEALED WINCH DRUM BEARINGS. OPTIONAL ADDITIONS INCLUDE AN OVER-TRAVEL TRIP SWITCH MECHANISM.

- WORKING LIFT \_\_\_\_\_ 500 Kg.
- MAXIMUM LIFT \_\_\_\_\_ 550 Kg.
- WIRE SPEED \_\_\_\_\_ 15 M/Min.
- WIRE CAPACITY \_\_\_\_\_ 14 METERS X 8MM WIRE
- MOTOR SIZE \_\_\_\_\_ 2.2 Kw. 3Ph.
- WEIGHT \_\_\_\_\_ 900 Kg.

SUPPLY REQUIRED \_\_\_\_\_ THREE PHASE AND NEUTRAL

ALTERATIONS	DATE	ALTERATIONS	DATE		TITLE	500 kg QUAYSIDE UNLOADING DAVIT		
		NOTE OF SUPPLY-3PH + NEUTRAL INCLUDED 8MM WIRE SIZE WAS INCORRECTLY STATED TO	02.06.05 BE 10MM 04.08.05		SCALE	SPENCER CARTER LTD.	DRG.NO.	
					1:20	FALMOUTH, CORNWALL, U.K.	623-695	
					DRN. M.J.S. DATE 27.10.04	TEL. (01326) 373423 FAX. (01326) 373571		