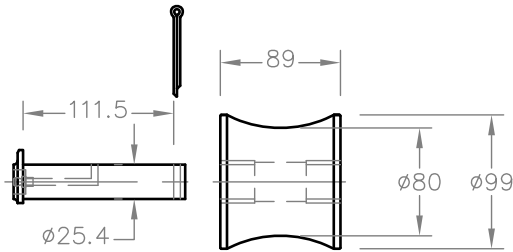
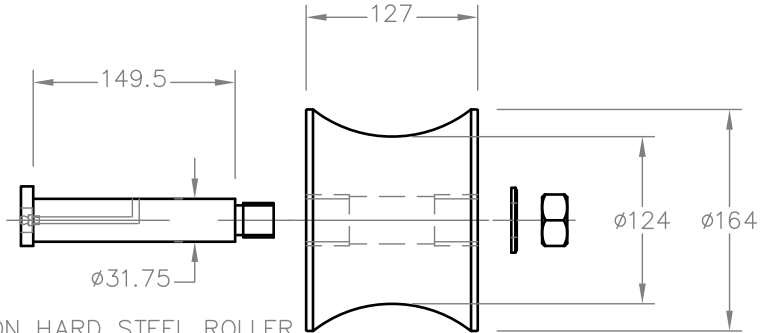


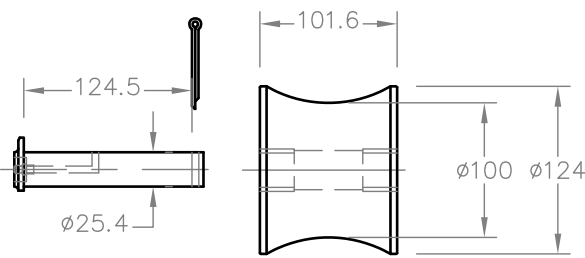
HARDENED STEEL SHEAVES are particularly well suited to wire rope and will provide exceptionally good service life. Sheaves have bronze bush bearings. Sheaves and Stainless steel pins are available as shown below for replacement or new frame constructions.



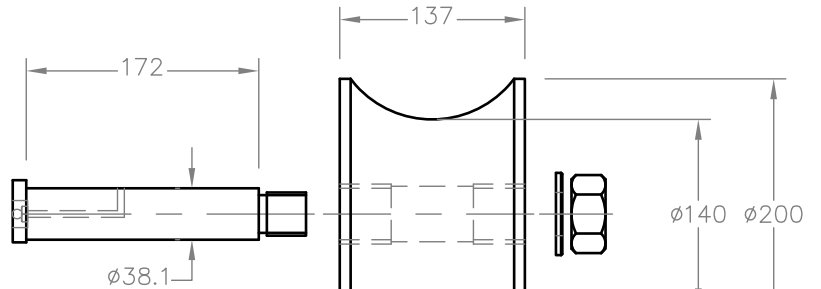
1 TON HARD STEEL ROLLER
AND PIN
REF SR1
Wt. 5 Kg.



3.5 TON HARD STEEL ROLLER
AND PIN
REF LR3
Wt. 16 Kg.

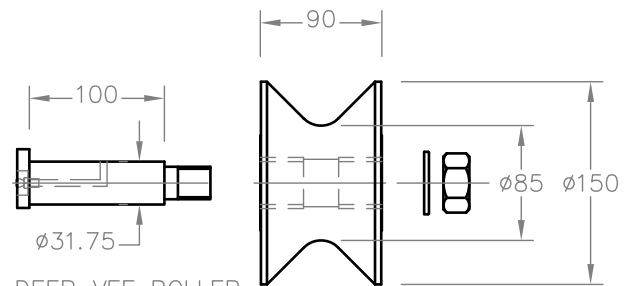


1.5 TON HARD STEEL ROLLER
AND PIN
REF MR2
Wt. 8 Kg.

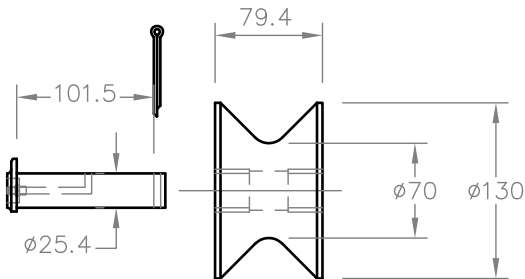


6 TON HARD STEEL ROLLER
AND PIN
REF BR4
Wt. 22 Kg.

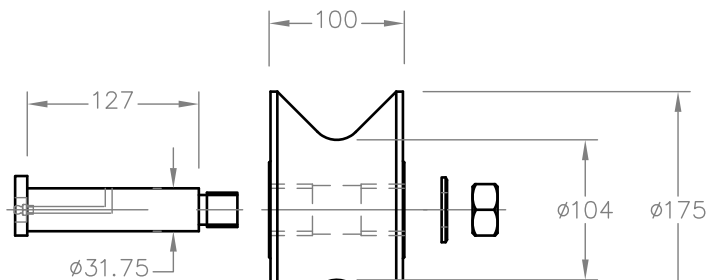
POTTING BLOCK SHEAVES are made in Cast Iron or Nylon.



1.5 TON DEEP VEE ROLLER
AND PIN.



1 TON DEEP VEE ROLLER
AND PIN.
REF RN1 for NYLON
REF RC1 for CAST IRON



2 TON DEEP VEE ROLLER
AND PIN.
REF RC2 for CAST IRON