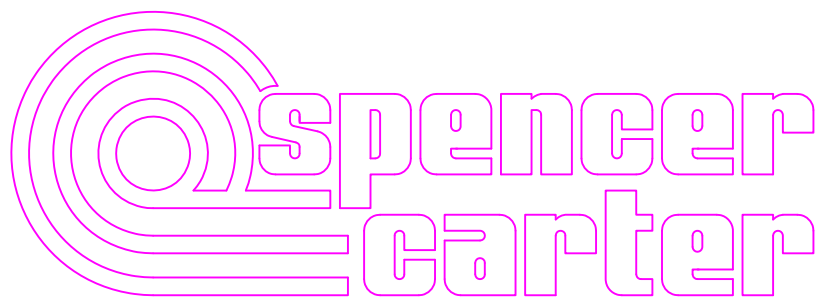
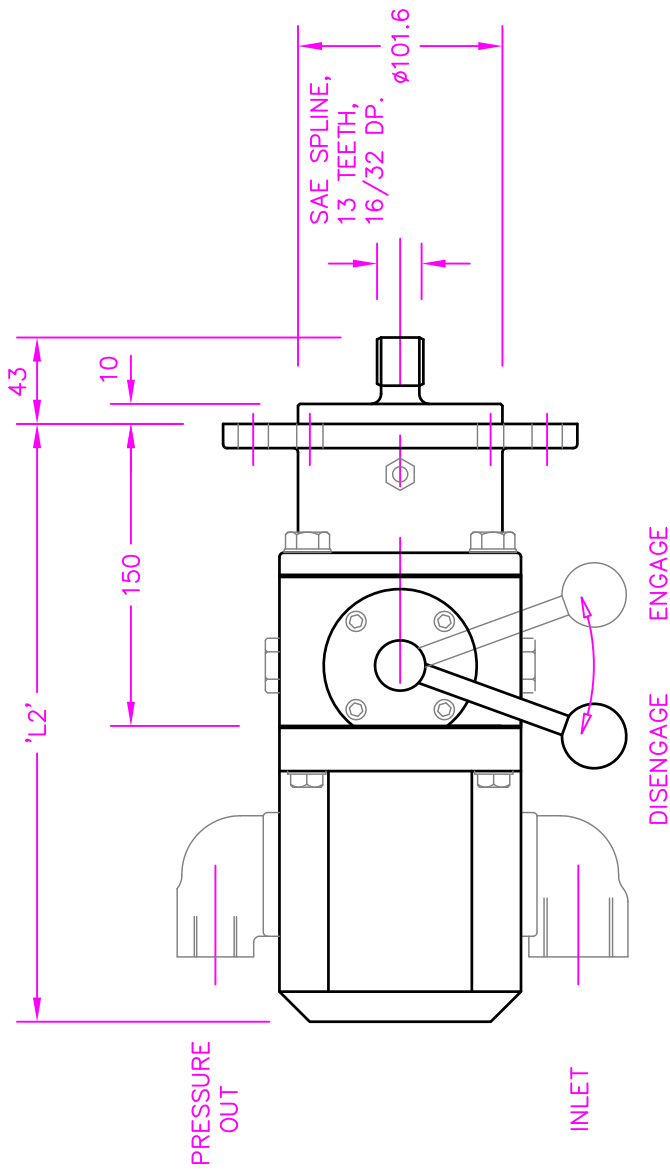


PUMP/CLUTCH UNIT - 2P RANGE



SPENCER CARTER LTD
TREGONIGGIE INDUSTRIAL ESTATE
FALMOUTH
CORNWALL
TR11 4SN
U.K.

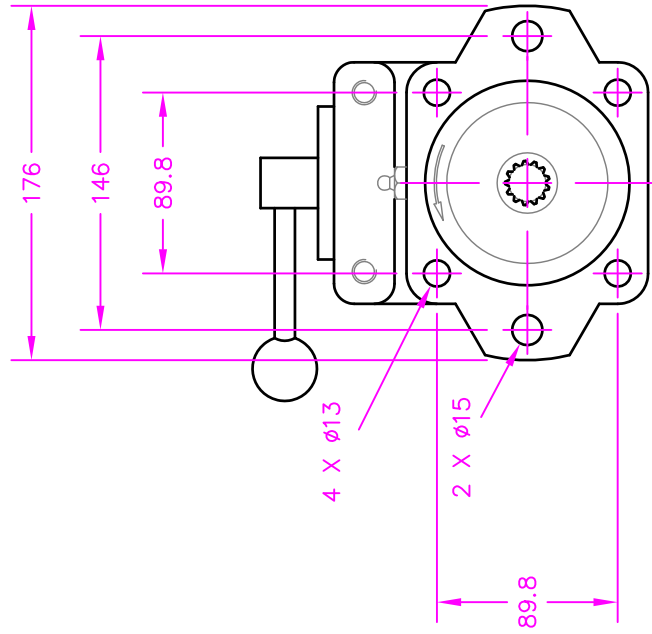
TEL. 01326 373423
FAX. 01326 373571



LENGTH 'L2'

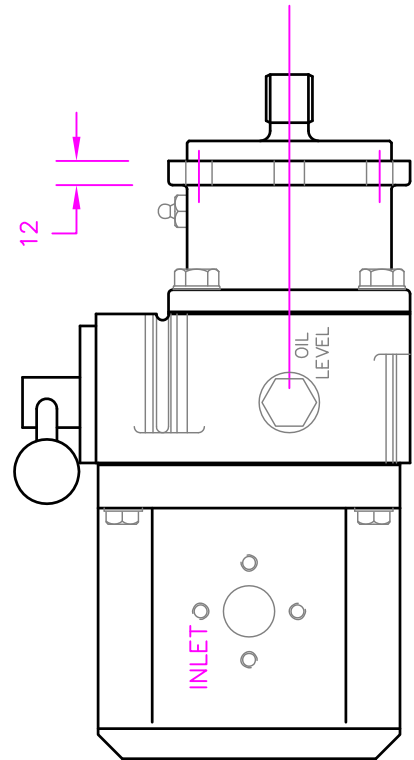
	'L2'
2PG4.5	265
2PG8	291

GEARBOX P.T.O. MOUNTING (MODEL 2PG...)
SAE'B' TWO AND FOUR BOLT FLANGE

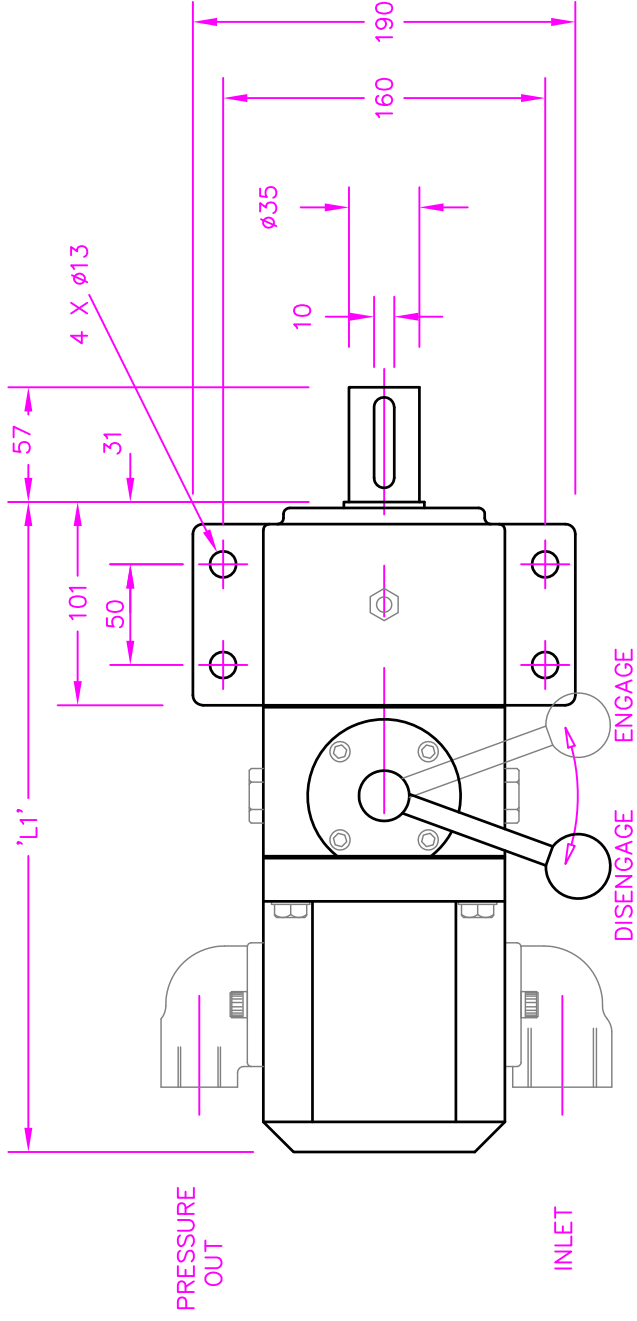


STANDARD
ROTATION
ANTICLOCKWISE.

INLET AND OUTLET PORTS
CAN BE REDIRECTED THROUGH
FOUR POSITIONS, 90° APART



scale 1:4

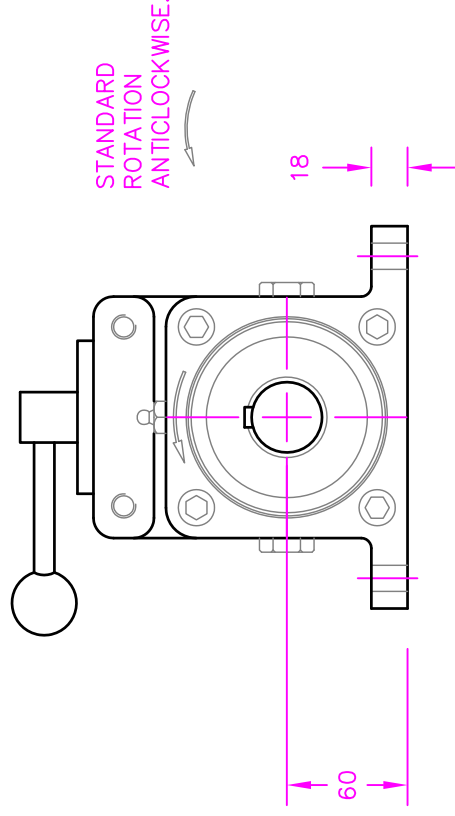
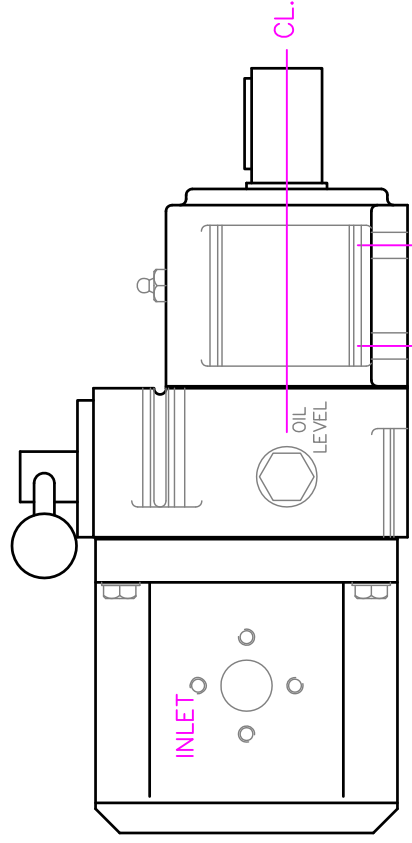


LENGTH 'L1'

	'L1'
2P4.5	291
2P8	317
2P10	323

2P BASE MOUNTING (MODEL 2P...)

INLET AND OUTLET PORTS
CAN BE REDIRECTED THROUGH
FOUR POSITIONS, 90° APART



scale 1:4

2P PUMP/CLUTCH UNIT

There are three pump sizes offered with the base mounting unit as standard, using the 2P 'ULTRA' fixed delivery gear pump.

MODEL 2P4.5 – 22 LPM at 1000 RPM. Max. pressure 200 bar.

MODEL 2P8 – 37 LPM at 1000 RPM. Max. pressure 200 bar.

MODEL 2P10 – 45 LPM at 1000 RPM. Max. pressure 200 bar.

Base mounting units are suitable for flexible coupling or vee belt drives.

Morse cable controls are available for remote operation of the clutch engagement.

The 'SAE B' gearbox mounting flange unit is limited to the two smaller pump sizes as follows:

MODEL 2PG4.5 – 22 LPM at 1000 RPM. Max. pressure 200 bar.

MODEL 2PG8 – 37 LPM at 1000 RPM. Max. pressure 200 bar.

SPECIFICATION

CLUTCH – Totally enclosed mechanical dog clutch running in an oil bath. The base mounting version has bearings suitable for side loading by vee belt drives. Light duty bearings are used in the more compact 'SAE B' flange mounting unit.

No clutch adjustments are required. Maintenance is limited to checking oil bath level, (SAE 90 gear oil) and grease application to the bearing housing.

HYDRAULIC PUMP – Heavy duty aluminium cased gear pump with adapter ports for service pipe couplings.

No local maintenance of the pump is required since lubrication is provided by the hydraulic system oil.

Weight....Approx. 20 Kg.

NOTE:

Pump ports indicated as inlet and outlet are correct for the standard assembly, with direction of rotation – anticlockwise.

If the unit is supplied for clockwise rotation, the inlet and outlet ports change sides.

MAINTENANCE.

Inspect and top up oil level in the clutch casing, using SAE 90 gear oil, every 100 hours running time. The two hexagon head plugs, one on either side, must be used for topping up with an oil can with a spout or similar. The same plug must be used used as the oil level gauge. Fill with oil until overflowing.

Apply a lithium base grease to the bearing assembly every 100 hours. Two strokes of a grease gun are adequate.