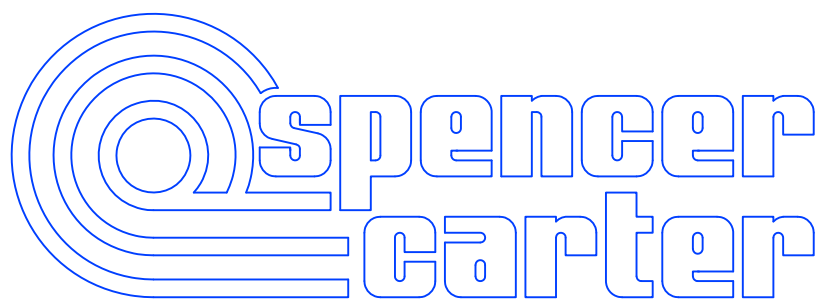
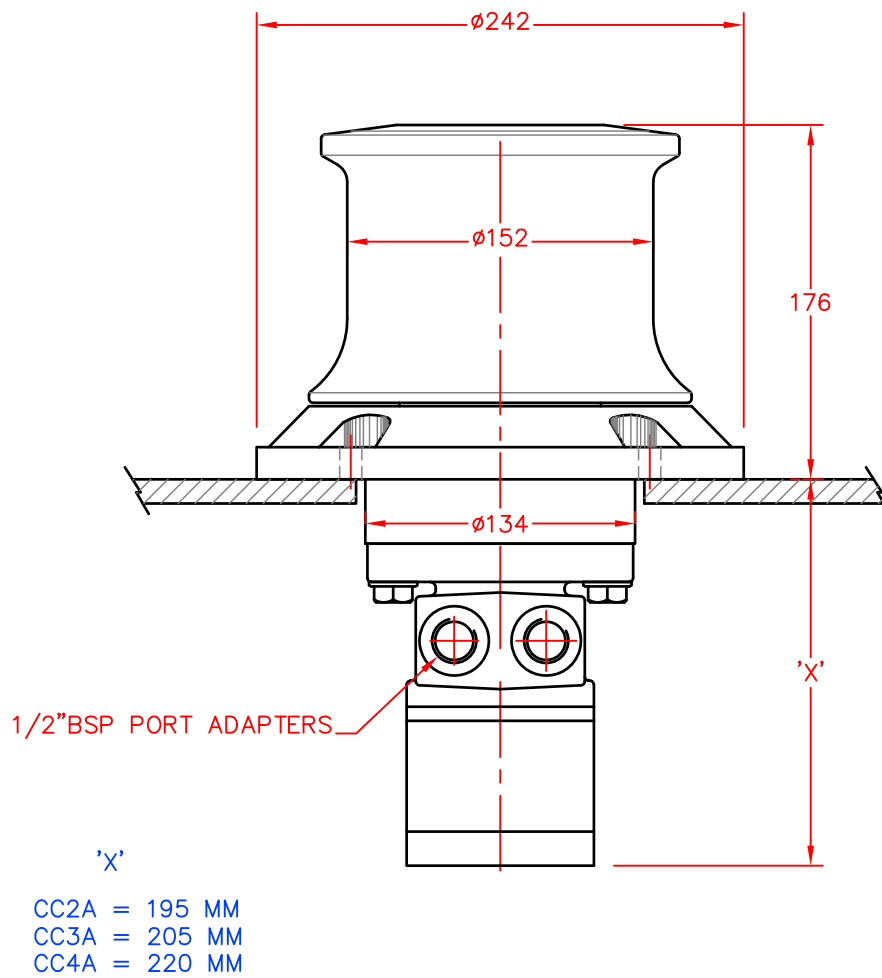
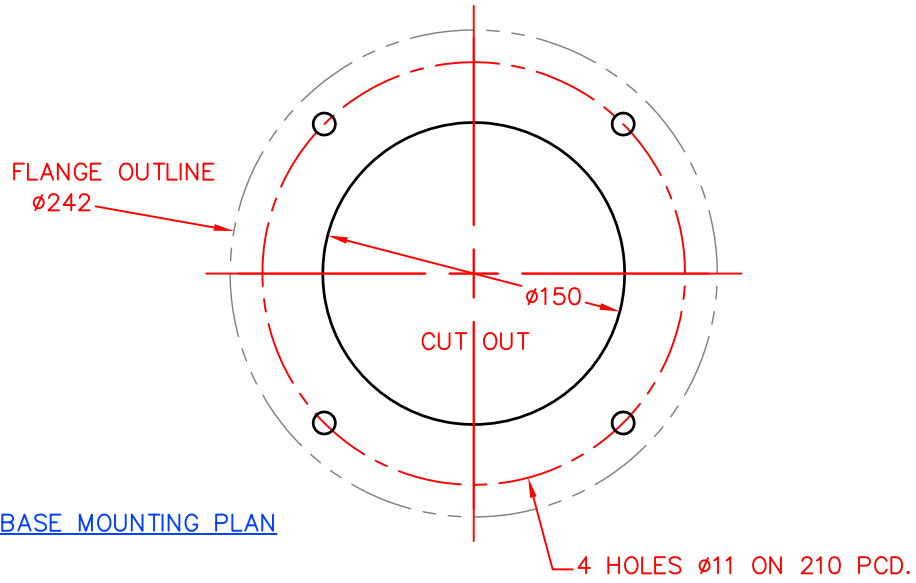


COMPACT ALUMINIUM CAPSTAN HAULER
REF. CC2A, CC3A AND CC4A



SPENCER CARTER LTD
TREGONIGGIE INDUSTRIAL ESTATE
FALMOUTH
CORNWALL
TR11 4SN
U.K.

TEL. 01326 373423
FAX. 01326 373571
www.spencercarter.com
info@spencercarter.com



COMPACT ALUMINIUM CAPSTAN HAULER – CC2A, CC3A AND CC4A

Scale 1:4

LIGHT WEIGHT ALUMINIUM COMPACT CAPSTAN HAULER.

Ref. CC2A _____ 350 Kg. Nominal pull

Ref. CC3A _____ 500 Kg. Nominal pull

Ref. CC4A _____ 750 Kg. Nominal pull

A simple capstan drum hauler for potting, cargo handling, anchoring or mooring etc., with a choice of three hydraulic motor sizes.

The base and bearing assembly are mainly aluminium for light weight. The capstan drum is also aluminium. The sealed bearings require no maintenance.

Working speeds quoted in the specification are in line with fishing requirements. Slower speeds may be more suitable for mooring duties and a smaller pump, hoses, and reservoir size may then be utilised.

The capstan hauler is intended for continuous operation with limited static holding time. There will be a slow rotational 'creep' if the winch is made to hold a static load for an extended period.

A hydraulically released multidisc brake is available if a positive static hold is an essential requirement.

350 KG. COMPACT ALUMINIUM CAPSTAN HAULER REF CC2A

HYDRAULIC MOTOR SIZE _____ 163 CC/REV

MOTOR TORQUE _____ 250 NM.

AVERAGE WORKING SPEED _____ 40 METRES/MIN. (83 RPM)

MAXIMUM WORKING SPEED _____ 80 METRES/MIN.

HYDRAULIC INPUT REQUIRED TO SUIT AVERAGE WORKING SPEED:

INPUT FLOW _____ 14 LITRES/MIN.

INPUT PRESSURE _____ 120 BAR

TYPICAL CHOICE OF ASSOCIATED EQUIPMENT

HYDRAULIC PUMP/CLUTCH UNIT _____ REF. 2P4.5 (21 LPM @ 1000 RPM)

RESERVOIR _____ REF. R2 (11 LITRE CAPACITY)

RETURN LINE FILTER _____ REF. F1

CONTROL VALVE _____ REF. 1V

HYDRAULIC HOSE SIZE _____ 3/8" BORE 2 WIRE REINFORCED

WEIGHT OF HAULER HEAD _____ APPROX. 15 KG.

500 KG. COMPACT ALUMINIUM CAPSTAN HAULER REF CC3A

HYDRAULIC MOTOR SIZE _____ 295 CC/REV

MOTOR TORQUE _____ 430 NM.

AVERAGE WORKING SPEED _____ 35 METRES/MIN. (72 RPM)

MAXIMUM WORKING SPEED _____ 70 METRES/MIN.

HYDRAULIC INPUT REQUIRED TO SUIT AVERAGE WORKING SPEED:

INPUT FLOW _____ 22 LITRES/MIN.

INPUT PRESSURE _____ 120 BAR

TYPICAL CHOICE OF ASSOCIATED EQUIPMENT

HYDRAULIC PUMP/CLUTCH UNIT _____ REF. 2P8 (36 LPM @ 1000 RPM)

RESERVOIR _____ REF. R5 (25 LITRE CAPACITY)

RETURN LINE FILTER _____ REF. F1

CONTROL VALVE _____ REF. 2V

HYDRAULIC HOSE SIZE _____ 1/2" BORE 2 WIRE REINFORCED

WEIGHT OF HAULER HEAD _____ APPROX. 16 KG.

750 KG. COMPACT ALUMINIUM CAPSTAN HAULER REF CC4A

HYDRAULIC MOTOR SIZE _____ 315 CC/REV
MOTOR TORQUE _____ 550 NM.
AVERAGE WORKING SPEED _____ 35 METRES/MIN. (72 RPM)
MAXIMUM WORKING SPEED _____ 85 METRES/MIN.

HYDRAULIC INPUT REQUIRED TO SUIT AVERAGE WORKING SPEED:

INPUT FLOW _____ 23 LITRES/MIN.
INPUT PRESSURE _____ 140 BAR

TYPICAL CHOICE OF ASSOCIATED EQUIPMENT

HYDRAULIC PUMP/CLUTCH UNIT _____ REF. 2P8 (36 LPM @ 1000 RPM)
RESERVOIR _____ REF. R5 (25 LITRE CAPACITY)
RETURN LINE FILTER _____ REF. F1
CONTROL VALVE _____ REF. 2V
HYDRAULIC HOSE SIZE _____ 1/2" BORE 2 WIRE REINFORCED

WEIGHT OF HAULER HEAD _____ APPROX. 18 KG.