

NET MASTER NET FLAKER/CLEARING MACHINE

DESIGNED TO SAVE TIME AND CLEAR NETS BACK WITH MINIMUM EFFORT.

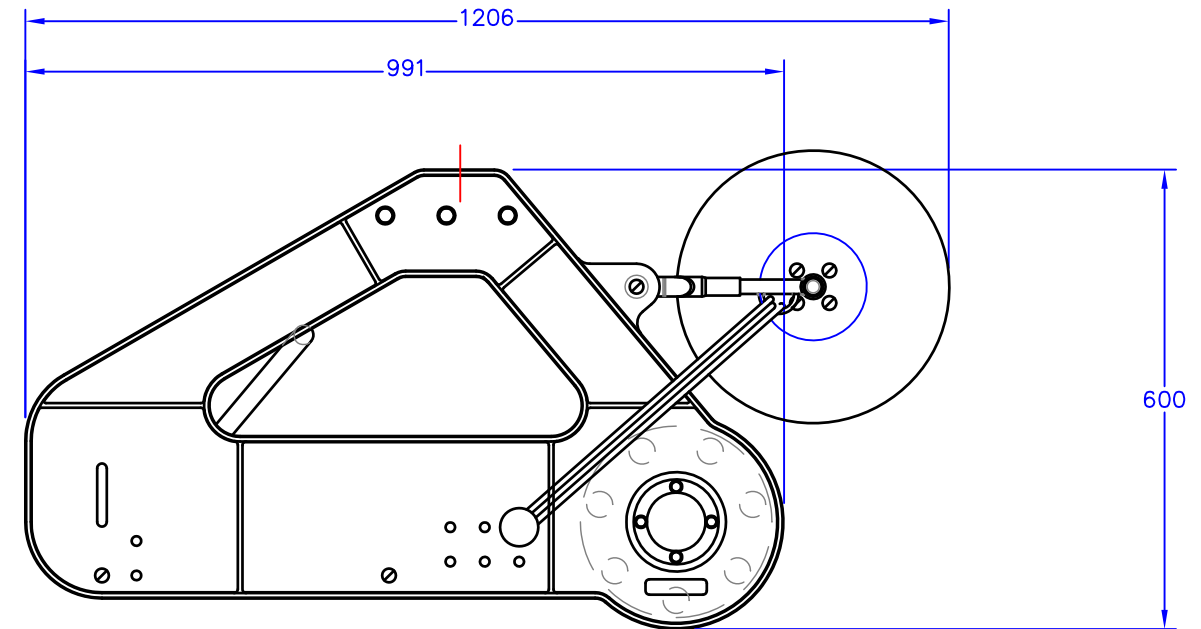
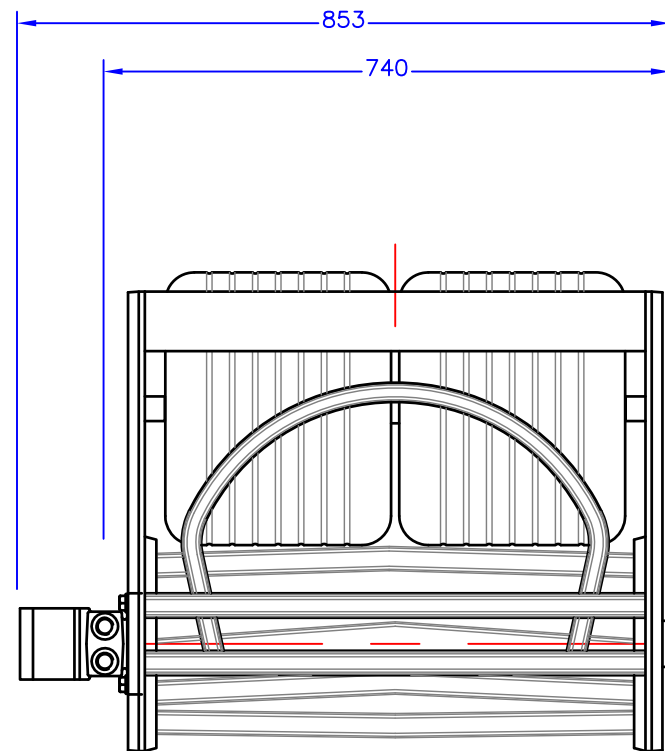
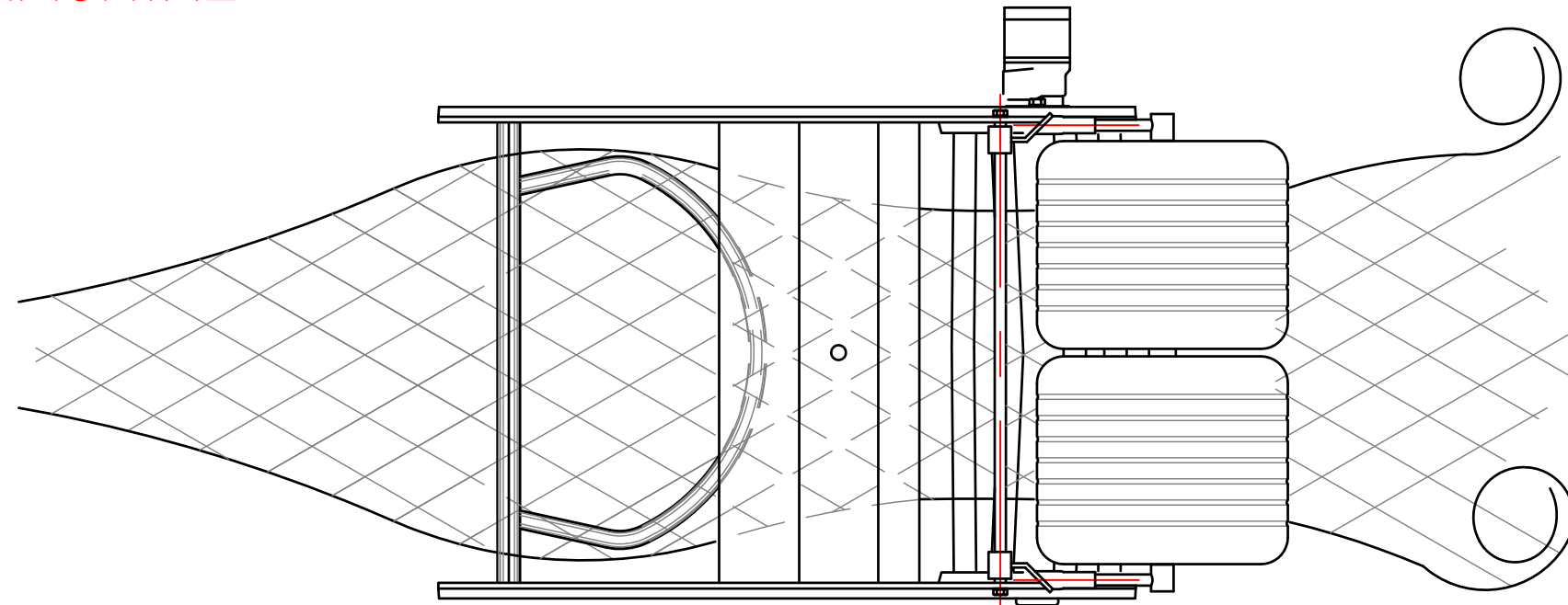
BEST SUITED FOR GEAR RIGGED WITH FLOATING HEAD LINE AND LEAD LINE BOTTOM.


EASILY INSTALLED.

LIGHT WEIGHT CONSTRUCTION—MARINE GRADE ALUMINIUM AND STAINLESS STEEL.

NET RETRIEVE SPEED _____ UP TO 100 METRES/MINUTE
HYDRAULIC SUPPLY REQUIRED _____ UP TO 13 LPM. AT 100 BAR

WEIGHT _____ 45 KG.
MOTOR SIZE _____ 80 CC/REV



| | | | | | | | | |
|-------------|------|-------------|------|----------|---|---|---------------------|----------------|
| ALTERATIONS | DATE | ALTERATIONS | DATE | MATERIAL | MACHINING TOLERANCES ONE DEC. PLACE (.0) = ±.15mm TWO DEC. PLACE (.00) = ±.05mm NO DEC. PLACE = ±.4mm UNLESS OTHERWISE STATED |  | TITLE NET FLAKER | |
| | | | | FINISH | | | SCALE 1:10 | DRN. M.J.S. |