

TYPICAL CHOICE OF ASSOCIATED EQUIPMENT.

HYDRAULIC PUMP/CLUTCH UNIT _____	REF. 5P40 (180 LPM. @ 1000 RPM.)
FLEXIBLE DRIVE COUPLING _____	REF. F110
RESERVOIR _____	REF. R36 (160 LITRES CAPACITY)
RETURN LINE FILTER _____	REF. F3
OIL COOLER (OPTIONAL) _____	REF. OC2
HYDRAULIC HOSE SIZE _____	1" BORE 2 WIRE REINFORCED
HYDRAULIC OIL (TYPICAL FOR U.K.) _____	HLP 46

2.5 TON TRAWL WINCH – TWO DRUMS (OVERSIZE)

RIGID BOX SECTION CHASSIS WITH FABRICATED STEEL END PLATES.
 STEEL WIRE DRUMS WITH PHOSPHOR BRONZE BEARINGS.
 ONE PIECE HIGH TENSILE STEEL MAINSHAFT WITH SEALED BALL RACE BEARINGS EACH END.
 CENTRALLY POSITIONED WORM AND WHEEL REDUCTION GEARBOX WITH HYDRAULIC MOTOR.
 HARDENED STEEL DOG CLUTCHES AND MANUALLY OPERATED BAND BRAKES WITH MARINE
 QUALITY LININGS FOR EACH DRUM.
 CAST IRON WARPING DRUM ENDS.
 CENTRALLY POSITIONED DIRECTIONAL CONTROL VALVE WITH RELIEF VALVE.
 MANUALLY OPERATED HYDRAULIC POWERED GUIDE ON GEAR.
 MAIN STEELWORK FINISHED HOT DIP GALVANISED AND ALL EPOXY PAINTED.

TYPICAL PERFORMANCE SPECIFICATION.

THESE FIGURES RELATE TO AN AVERAGE INSTALLATION USING THE HYDRAULIC PUMP
 SIZE 5P40 AND AN ENGINE/PUMP SPEED OF 1000 RPM. THE SPECIFICATION QUOTES A
 WINCH SPEED OF 50 RPM. IN PRACTICE, THIS WILL VARY BETWEEN 61 RPM WITH NO
 LOAD APPLIED, REDUCING TO 49 RPM AT FULL LOAD (JUST BEFORE THE WINCH STALLS).
 AT FULL LOAD, THE ENGINE MUST PROVIDE 79 HP. (59 KW.) AT 1000 RPM. TO DRIVE
 THE WINCH.

HYDRAULIC SUPPLY REQUIRED _____ 180 LPM. AT 175 BAR

WINCH SPEED _____ 50 RPM.
 WINCH TORQUE _____ 6800 NM.

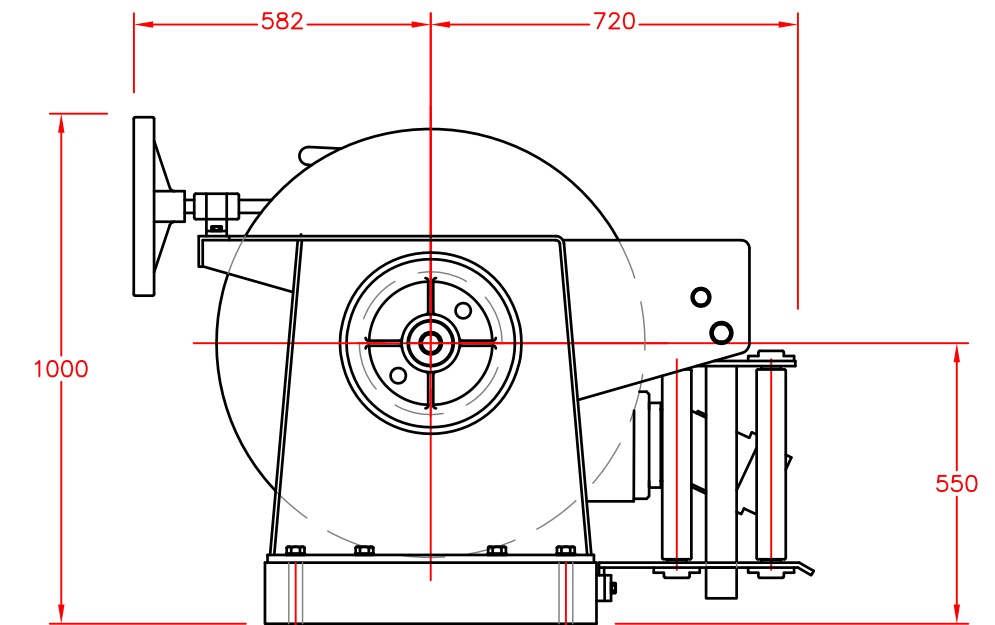
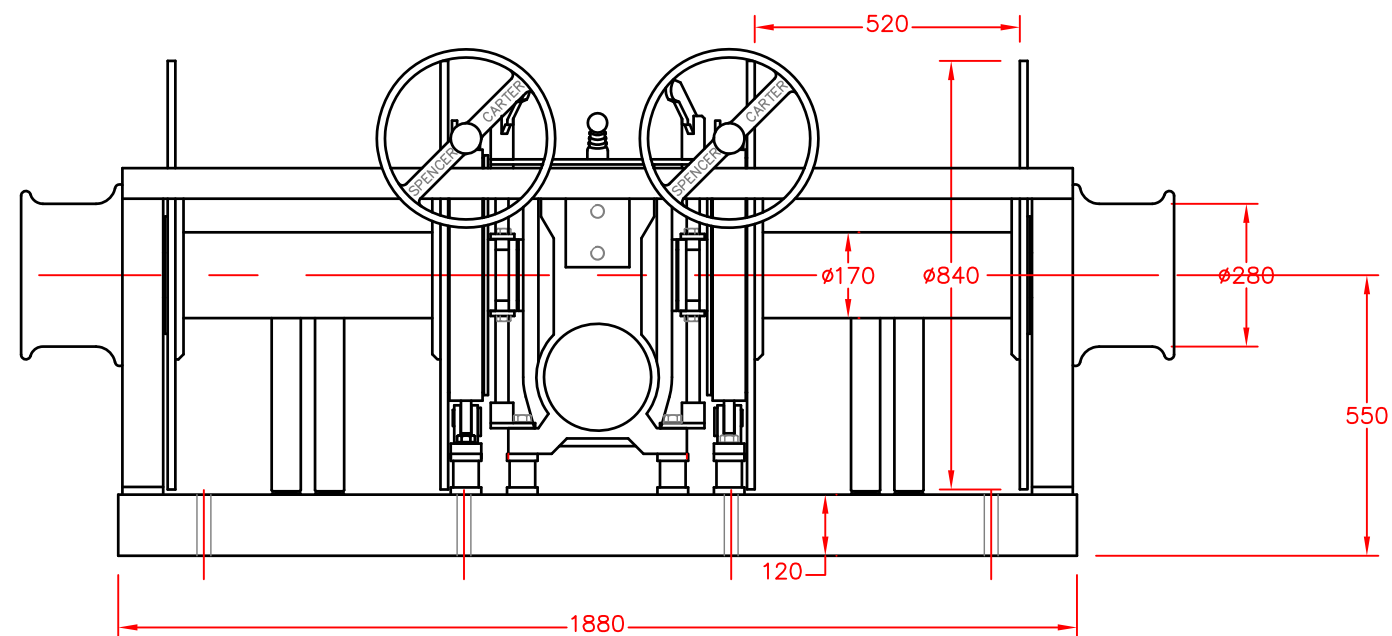
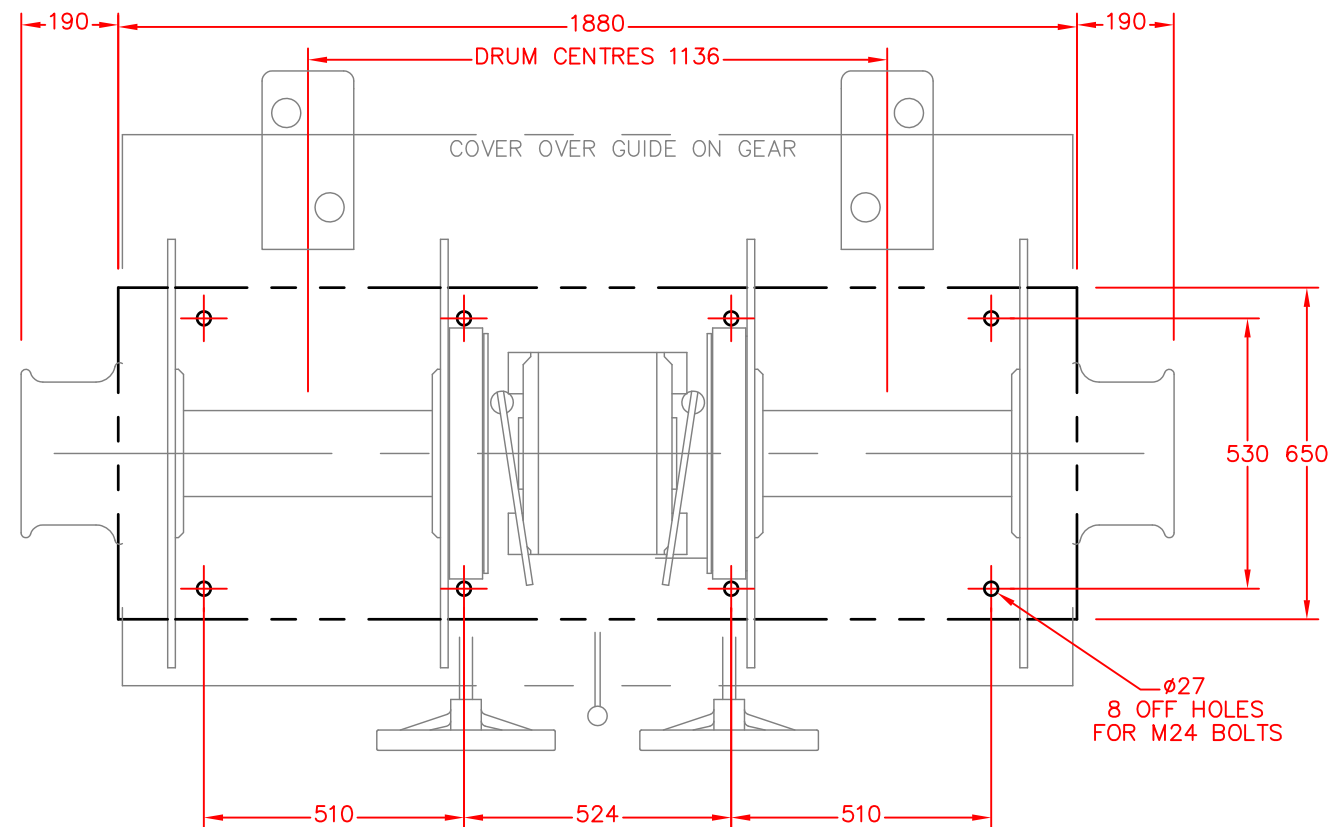
FIRST LAYER WIRE SPEED _____ 25 METRES/MINUTE
 MID LAYER WIRE SPEED _____ 70 METRES/MINUTE
 TOP LAYER WIRE SPEED _____ 95 METRES/MINUTE


FIRST LAYER PULL _____ 7900 KG.
 MID LAYER PULL _____ 3180 KG.
 TOP LAYER PULL _____ 2360 KG.

MID LAYER WIRE CAPACITY _____ 350 METRES X 14 MM WIRE PER DRUM
 TOP LAYER WIRE CAPACITY (STANDARD) _____ 700 METRES X 14 MM WIRE PER DRUM

THE TOP LAYER (STANDARD) IS CALCULATED TO HAVE FILLED THE WINCH DRUM TO $\phi 610$
 (NOTE THAT THIS WINCH WITH OVERSIZE DRUMS HAS CAPACITY FOR AN ADDITIONAL 5 LAYER
 OF $\phi 14$ WIRE.)

TOP LAYER WIRE CAPACITY (OVERSIZE) _____ 1000 METRES X 14 MM WIRE PER DRUM
 APPROXIMATE WEIGHT _____ 1600 KG.



ALTERATIONS	DATE	ALTERATIONS	DATE			TITLE	
						2.5 TON TRAWL WINCH—OVERSIZE DRUMS	
				SCALE		DRG.NO.	
				1:15		SPENCER CARTER LTD.	
				DRN. M.J.S. DATE 30.11.01		FALMOUTH, CORNWALL, U.K.	
						TEL. (01326) 373423	
						FAX. (01326) 373571	
						623-614	